

# CPTC-SERPINB3-3 (CAB080073)

Uniprot ID: [P48594](#)

Protein name: SPB4\_HUMAN

Full name: Serpin B4

Tissue specificity: Squamous cells.

Function: May act as a protease inhibitor to modulate the host immune response against tumor cells.

Subcellular location:

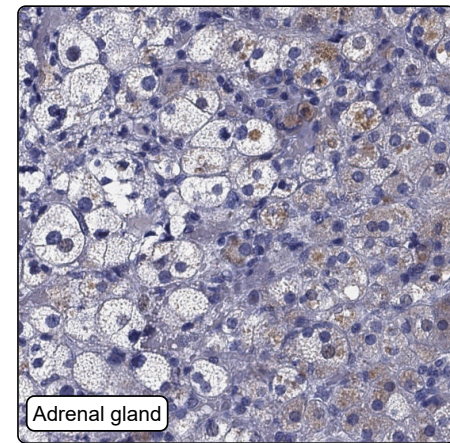
Cytoplasm (*experimental evidence*)

NOTE: Seems to also be secreted in plasma by cancerous cells but at a low level.

Protein existence: Experimental evidence at protein level

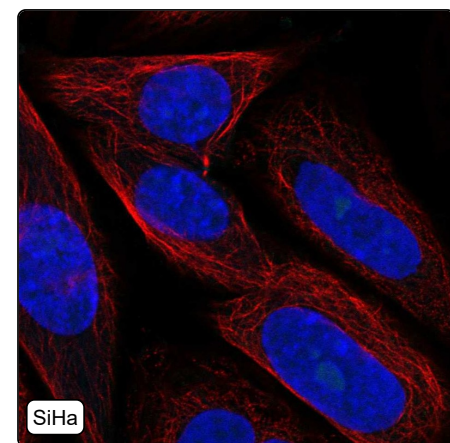
Comment:

## Immunohistochemistry



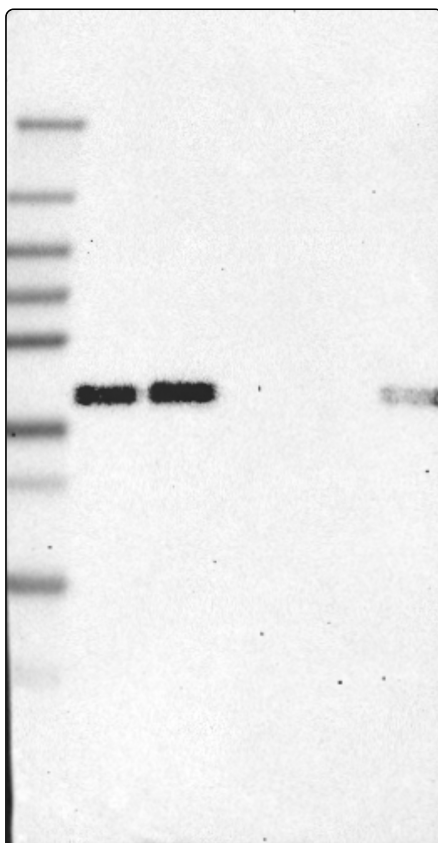
IHC protocol:	HIER pH6, Dilution 1:250
IHC test staining:	Cytoplasmic positivity in few tissues.
Literature conformance:	Partly consistent with extensive gene/protein characterization data
Literature significance:	
RNA similarity:	Very low consistency between antibody staining and RNA expression data
RNA tissue specificity:	Group enriched (cervix,esophagus,vagina)
RNA tissue distribution:	Detected in some
IHC Sibling similarity:	Other antibody shows dissimilar IHC staining pattern

## Immunofluorescence



IF Overlay:	antibody (green), anti-tubulin (red) and DAPI (blue)
IF main location:	
IF additional location:	
IF approved for publication on HPA:	No
IF in SiHa:	Negative
IF in SK-MEL-30:	Negative
IF in U-2 OS:	Negative

# Western blot



<b>WB Size markers (kDa):</b>	250, 130, 100, 70, 55, 35, 25, 15, 10
<b>WB Lanes:</b>	Marker (1), RT4 (2), U-251 MG (3), Plasma (4), Liver (5), Tonsil (6)
<b>WB Target weight (kDa):</b>	24, 42, 45
<b>WB Validation:</b>	Supported (Single band corresponding to the predicted size in kDa (+/-20%.))