

CPTC-LBX1-2 (CAB079927)

Uniprot ID: [P52954](#)

Protein name: LBX1_HUMAN

Full name: Transcription factor LBX1

Function: Transcription factor required for the development of GABAergic interneurons in the dorsal horn of the spinal cord and migration and further development of hypaxial muscle precursor cells for limb muscles, diaphragm and hypoglossal cord.

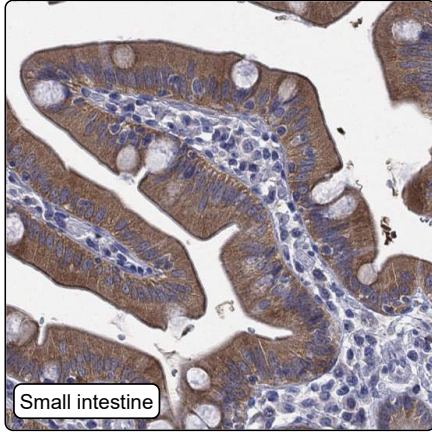
Subcellular location:

Nucleus (*curator inference*)

Protein existence: Experimental evidence at protein level

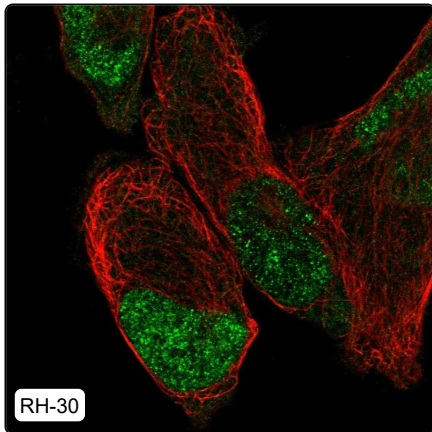
Comment:

Immunohistochemistry



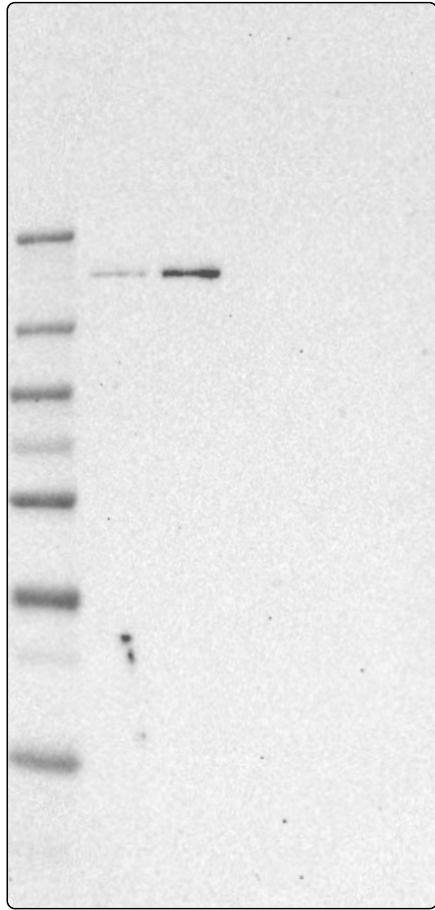
IHC protocol:	HIER pH6, Dilution 1:250
IHC test staining:	Weak to moderate cytoplasmic positivity in gastrointestinal tract. Remaining tissues were negative.
Literature conformance:	Not consistent with gene/protein characterization data
Literature significance:	Limited
RNA consistency:	Not consistent with RNA expression data
IHC Sibling similarity:	Other antibody shows dissimilar IHC staining pattern
IHC fail comment:	ANTIBODY FAILED: Improbable histological location, Not consistent with RNA

Immunofluorescence



IF Overlay:	antibody (green), anti-tubuline (red) and DAPI (blue)
IF main location:	Nucleoplasm - 7: Approved (auto)
IF additional location:	Nucleoli - 7: Approved (auto)
IF Antibody score:	Approved
IF in HEK 293:	Nucleoplasm Nucleoli
IF in RH-30:	Nucleoplasm
IF in U-2 OS:	Nucleoplasm Nucleoli

Western blot



WB Size markers (kDa):	250, 130, 100, 70, 55, 35, 25, 15, 10
WB Lanes:	Marker (1), RT4 (2), U-251 MG (3), Plasma (4), Liver (5), Tonsil (6)
WB Target weight (kDa):	30
WB Validation:	Uncertain (Single band differing more than +/-20% from predicted size in kDa and not supported by experimental and/or bioinformatic data.)