

CPTC-FOXQ1-2 (CAB080326)

Uniprot ID: [Q9C009](#)

Protein name: FOXQ1_HUMAN

Full name: Forkhead box protein Q1

Tissue specificity: Expressed predominantly in the stomach, trachea, bladder and salivary gland.

Function: Plays a role in hair follicle differentiation.

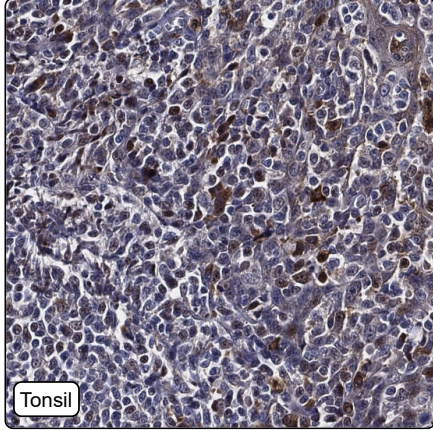
Subcellular location:

Nucleus (*match to sequence model*)

Protein existence: Experimental evidence at transcript level

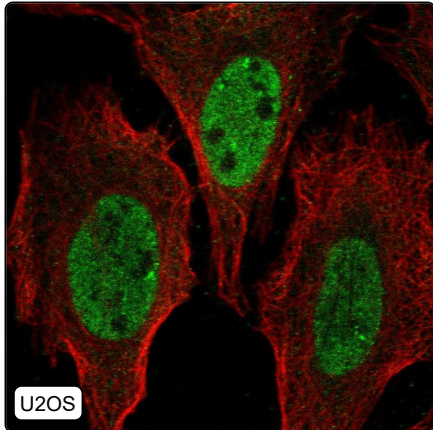
Comment:

Immunohistochemistry



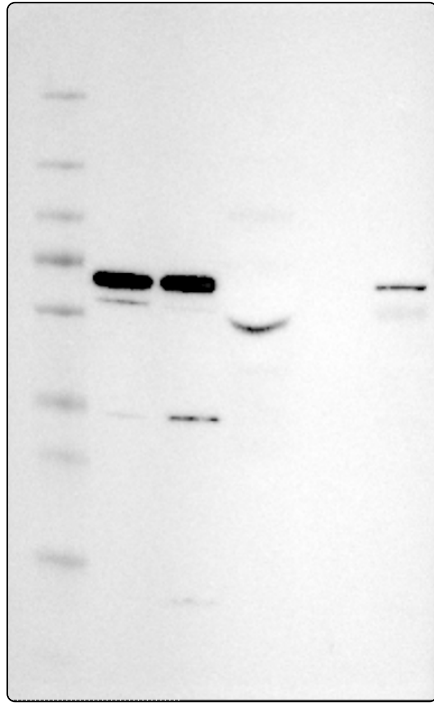
IHC protocol:	HIER pH6, Dilution 1:500
IHC test staining:	Cytoplasmic positivity in a subset of immune cells. Additional plasma positivity.
Literature conformance:	Not consistent with gene/protein characterization data
Literature significance:	
RNA similarity:	Very low consistency between antibody staining and RNA expression data
RNA tissue specificity:	Tissue enhanced (stomach 1, urinary bladder)
RNA tissue distribution:	Detected in many
IHC Sibling similarity:	Other antibody shows dissimilar IHC staining pattern

Immunofluorescence



IF Overlay:	antibody (green), anti-tubulin (red) and DAPI (blue)
IF main location:	Nucleoplasm - 7: Approved (auto)
IF additional location:	Nucleoli fibrillar center - 7: Approved (auto)
IF approved for publication on HPA:	Yes
IF in THP-1:	Nucleoplasm Nucleoli Fibrillar center
IF in U2OS:	Nucleoplasm

Western blot



WB Size markers (kDa):	250, 130, 100, 70, 55, 35, 25, 15, 10
WB Lanes:	Marker (1), RT-4 (2), U-251MG (3), Plasma (4), Liver (5), Tonsil (6)
WB Target weight (kDa):	42
WB Validation:	Uncertain (Weak band of predicted size but with additional bands of higher intensity also present.)