

# Fascin

## UniProt

Function: Organizes filamentous actin into bundles with a minimum of 4.1:1 actin/fascin ratio. Probably involved in the assembly of actin filament bundles present in microspikes, membrane ruffles, and stress fibers.

Subcellular location: Cytoplasm (By similarity).

Tissue specificity: Ubiquitous.

**Three antibodies: Fascin-1, Fascin-2 and Fascin-3 were tested and all antibodies were approved for IHC. Fascin-1 was selected for full protein profiling.**

## Fascin-1 (CAB035991)



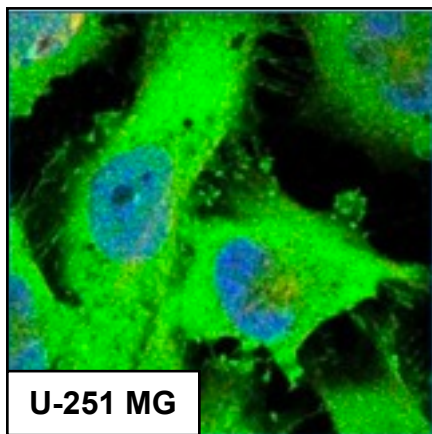
### Immunohistochemistry

**IHC protocol:** HIER pH 6, Dilution 1:2000

**IHC test staining:** Strong and distinct cytoplasmic staining in most tissues examined.

### IHC Annotators comments

Squamous epithelia, the CNS, adrenal cortex, endothelium, endometrial glands, seminiferous duct cells, breast, placental decidual cells, urothelium, subsets of bone marrow poietic and stromal cells displayed moderate to strong cytoplasmic immunoreactivity. Remaining normal cells were negative. Most of the malignant cells showed moderate to strong positivity. Malignant lymphomas, hepatocellular, colorectal, breast, prostate, renal and gastric cancers were negative in a majority of cases.

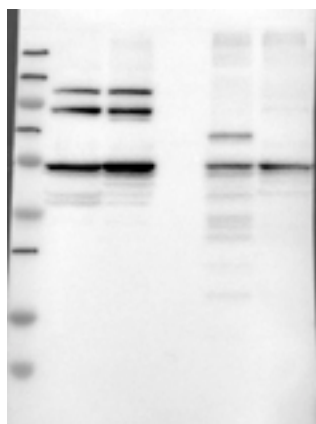


### Immunofluorescence

**IF Overlay:** antibody (green), anti-tubuline (red) and DAPI (blue)

**IF Localisation:** Staining of plasma membrane and cytoplasm in all three cell lines.

**IF Validation:** Subcellular localization partly supported by literature or where no literature is available.



### Western blot

**WB Size markers (kDa):** 230, 130, 95, 72, 56, 36, 28, 17, 11

**WB Lanes:** Marker(1), RT-4(2), U251 MG(3), Plasma(4), Liver(5), Tonsil(6)

**WB Target weight (kDa):** 55, 16, 15, 14

**WB Validation:** Supportive (Band of predicted size in kDa (+/-20%) with additional bands present)