

HSPD1-1

Uniprot ID: P10809

Protein name: CH60_HUMAN

Full name: 60 kDa heat shock protein, mitochondrial

Protein existence: evidence at protein level

Function: Implicated in mitochondrial protein import and macromolecular assembly. May facilitate the correct folding of imported proteins. May also prevent misfolding and promote the refolding and proper assembly of unfolded polypeptides generated under stress conditions in the mitochondrial matrix.

Subcellular location: Mitochondrion matrix

Three antibodies: HSPD1-1, HSPD1-2 and HSPD1-3 were tested. HSPD1-1 was selected for full protein profiling.

HSPD1-1 (CAB072816)

OK



Immunohistochemistry

IHC protocol: HIER pH 6, Dilution 1:35000

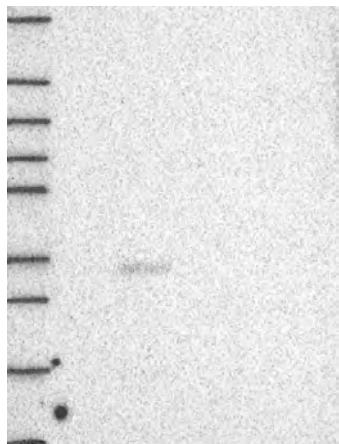
IHC test staining: Has a general granular cytoplasmic staining

IHC Annotators comments

Normal tissues showed moderate to strong cytoplasmic positivity, with a granular pattern observed in normal tissues. Adipocytes were weakly stained or negative.

Cancer tissues showed strong cytoplasmic immunoreactivity, with a granular pattern.

Pending Immunofluorescence



Western blot

WB Size markers (kDa): 250, 130, 95, 72, 55, 36, 28, 17, 10

WB Lanes: Marker(1), RT-4(2), U251 MG(3), Plasma(4), Liver(5), Tonsil(6)

WB Target weight (kDa): 61, 10, 25, 24, 19, 9, 6

WB Validation: Uncertain (No bands were detected)