

Glutamate--cysteine ligase regulatory subunit

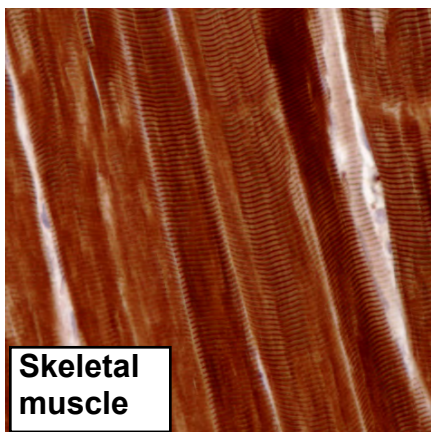
UniProt

Pathway: Sulfur metabolism; glutathione biosynthesis; glutathione from L-cysteine and L-glutamate: step 1/2.

Tissue specificity: In all tissues examined. Highest levels in skeletal muscle.

Three antibodies: GCLM-1, GCLM-2 and GCLM-3 were tested. All three antibodies were approved for IHC. GCLM-1 was selected for full protein profiling.

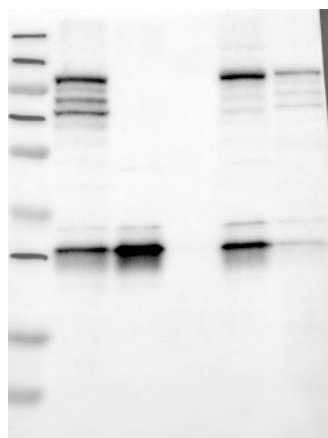
GCLM-3 (CAB040556)



Immunohistochemistry

IHC protocol: HIER pH 6, Dilution 1:5000

IHC test staining: Ubiquitous cytoplasmic staining with high expression in, eg skeletal muscle and tonsil.



Western blot

WB Size markers (kDa): 250, 130, 95, 72, 55, 36, 28, 17, 11

WB Lanes: Marker(1), RT-4(2), U251 MG(3), Plasma(4), Liver(5), Tonsil(6)

WB Target weight (kDa): 31

WB Validation: Supportive - Band of predicted size in kDa (+/-20%) with additional bands present.