

CPTC-CRABP2-2 (CAB080413)

Uniprot ID: [P29373](#)

Protein name: RABP2_HUMAN

Full name: Cellular retinoic acid-binding protein 2

Function: Transports retinoic acid to the nucleus. Regulates the access of retinoic acid to the nuclear retinoic acid receptors.

Subcellular location:

Cytoplasm

Endoplasmic reticulum

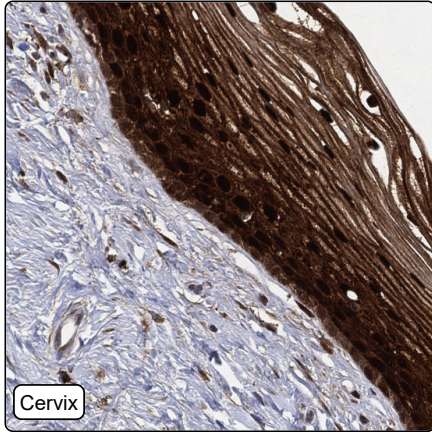
Nucleus

NOTE: Upon ligand binding, a conformation change exposes a nuclear localization motif and the protein is transported into the nucleus.

Protein existence: Experimental evidence at protein level

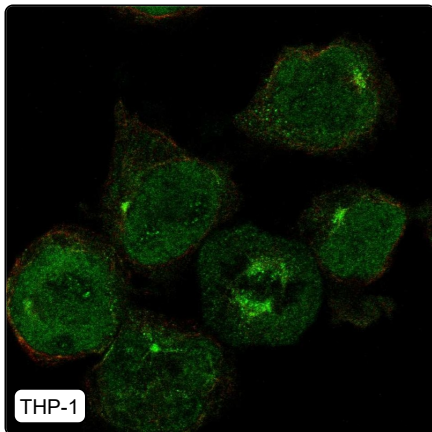
Comment:

Immunohistochemistry



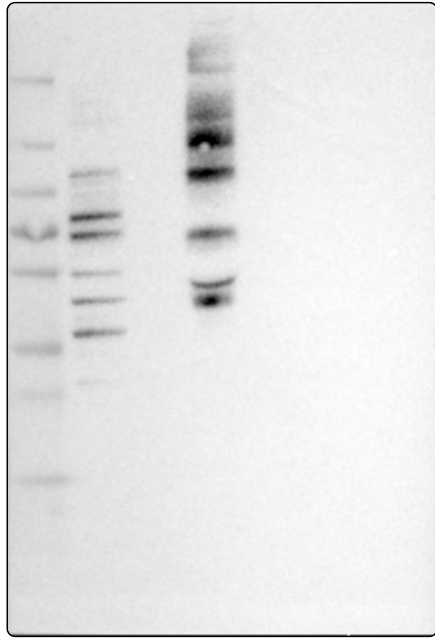
IHC protocol:	HIER pH6, Dilution 1:850
IHC test staining:	Cytoplasmic positivity in most tissues. Additional nuclear staining in squamous epithelial cells.
Literature conformance:	Consistent with extensive gene/protein characterization data
Literature significance:	
RNA similarity:	Low consistency between antibody staining and RNA expression data
RNA tissue specificity:	Tissue enhanced (esophagus,vagina)
RNA tissue distribution:	Detected in all
IHC Sibling similarity:	Other antibody shows similar IHC staining pattern

Immunofluorescence



IF Overlay:	antibody (green), anti-tubulin (red) and DAPI (blue)
IF main location:	Nucleoli - 3: Supportive (auto) Nucleoli fibrillar center - 3: Supportive (auto) Mitotic spindle - 12: Uncertain (auto) Centriolar satellite - 12: Uncertain (auto)
IF additional location:	
IF approved for publication on HPA:	No
IF in THP-1:	Nucleoli Fibrillar center Mitotic spindle Centriolar satellites
IF in U2OS:	Nucleoli

Western blot



WB Size markers (kDa):	250, 130, 100, 70, 55, 35, 25, 15, 10
WB Lanes:	Marker (1), RT-4 (2), U-251MG (3), Plasma (4), Liver (5), Tonsil (6)
WB Target weight (kDa):	9, 16, 16, 16
WB Validation:	Uncertain (Only bands not corresponding to the predicted size.)