

# MAGE4

## UniProt

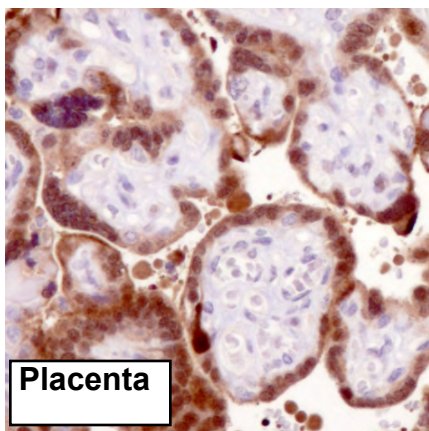
**Function:** Not known, though may play a role in embryonal development and tumor transformation or aspects of tumor progression.

**Subcellular location:** Not determined

**Tissue specificity:** Expressed in many tumors of several types, such as melanoma, head and neck squamous cell carcinoma, lung carcinoma and breast carcinoma, but not in normal tissues except for testes and placenta.

**Three antibodies: MAGE4-1, MAGE4-2 and MAGE4-3 were tested. MAGE4-1 and MAGE4-2 were approved for IHC. MAGE4-1 was selected for full protein profiling.**

## MAGE4-1 (CAB040535)



### Immunohistochemistry

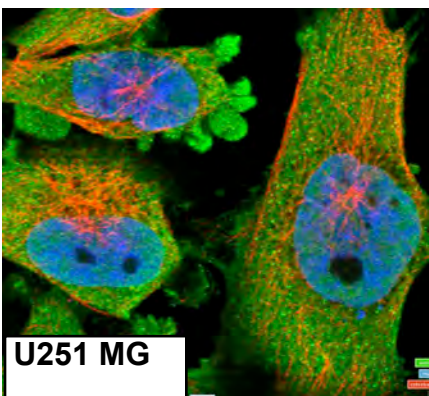
**IHC protocol:** HIER pH 6, Dilution 1:15000

**IHC test staining:** Nuclear and cytoplasmic staining, mainly in testis, placenta and squamous cell carcinomas (SCC).

### IHC Annotators comments

Cells in seminiferous ducts and granular layer of epidermis displayed strong cytoplasmic and nuclear positivity. Placental trophoblasts and Leydig cells were moderately stained. Remaining normal cells were negative.

Seminomas, several squamous and basal cell carcinomas, urothelial and ovarian cancers along with a few colorectal cancers and duct carcinomas of breast displayed moderate to strong cytoplasmic and nuclear immunoreactivity. Remaining malignancies were generally negative.

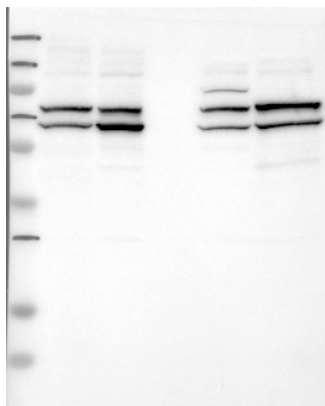


### Immunofluorescence

**IF Overlay:** antibody (green), anti-tubuline (red) and DAPI (blue)

**IF Localisation:** Staining of nucleus, cytoplasm and nuclear membrane in all three cell lines.

**IF Validation:** Subcellular localization partly supported by literature or where no literature is available



### Western blot

**WB Size markers (kDa):** 250, 130, 95, 72, 55, 36, 28, 17, 11

**WB Lanes:** Marker(1), RT-4(2), U251 MG(3), Plasma(4), Liver(5), Tonsil(6)

**WB Target weight (kDa):** 38, 35, 26, 25, 23, 19

**WB Validation:** Non-Supportive (Only bands not corresponding to the predicted size)