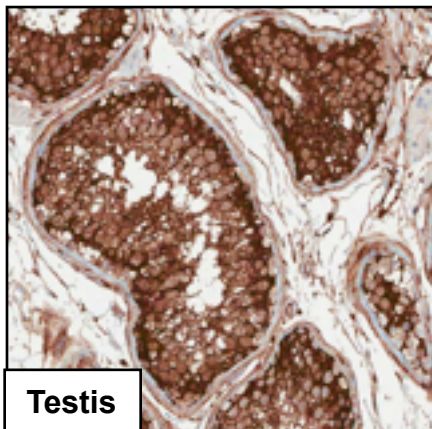


Fascin

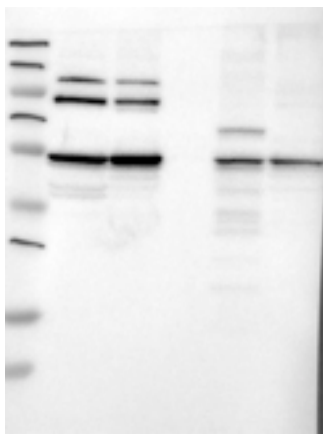
Fascin-2 (CAB035992)



Immunohistochemistry

IHC protocol: HIER pH 6, Dilution 1:1400

IHC test staining: Strong cytoplasmic staining in most tissues examined.



Western blot

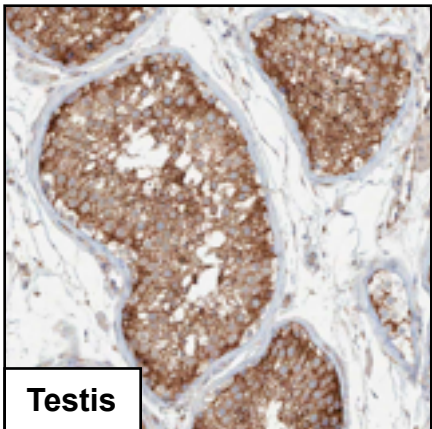
WB Size markers (kDa): 230, 130, 95, 72, 56, 36, 28, 17, 11

WB Lanes: Marker(1), RT-4(2), U251 MG(3), Plasma(4), Liver (5), Tonsil(6)

WB Target weight (kDa): 55, 16, 15, 14

WB Validation: Supportive (Band of predicted size in kDa (+/-20%) with additional bands present)

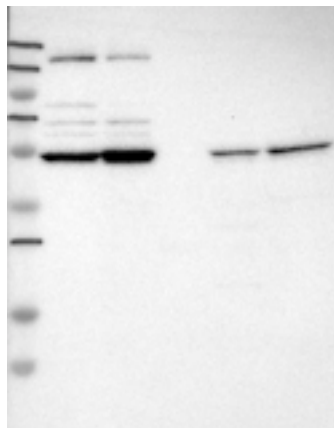
Fascin-3 (CAB035993)



Immunohistochemistry

IHC protocol: HIER pH 6, Dilution 1:550

IHC test staining: Strong cytoplasmic staining in many tissues.



Western blot

WB Size markers (kDa): 230, 130, 95, 72, 56, 36, 28, 17, 11

WB Lanes: Marker(1), RT-4(2), U251 MG(3), Plasma(4), Liver (5), Tonsil(6)

WB Target weight (kDa): 55, 16, 15, 14

WB Validation: Supportive (Band of predicted size in kDa (+/-20%) with additional bands present)