

CPTC-EIF2A-2 (CAB080321)

Uniprot ID: [Q9BY44](#)

Protein name: EIF2A_HUMAN

Full name: Eukaryotic translation initiation factor 2A

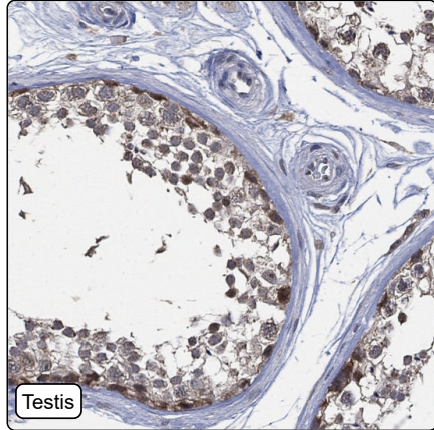
Tissue specificity: Widely expressed. Expressed at higher level in pancreas, heart, brain and placenta.

Function: Functions in the early steps of protein synthesis of a small number of specific mRNAs. Acts by directing the binding of methionyl-tRNAi to 40S ribosomal subunits. In contrast to the eIF-2 complex, it binds methionyl-tRNAi to 40S subunits in a codon-dependent manner, whereas the eIF-2 complex binds methionyl-tRNAi to 40S subunits in a GTP-dependent manner.

Protein existence: Experimental evidence at protein level

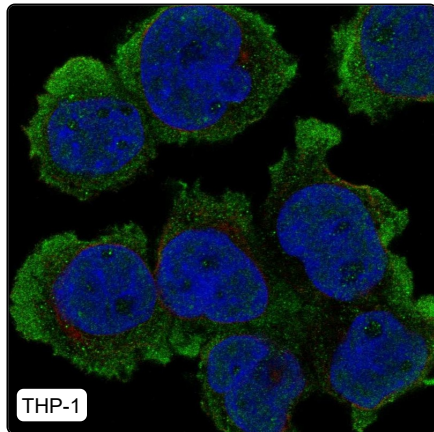
Comment:

Immunohistochemistry



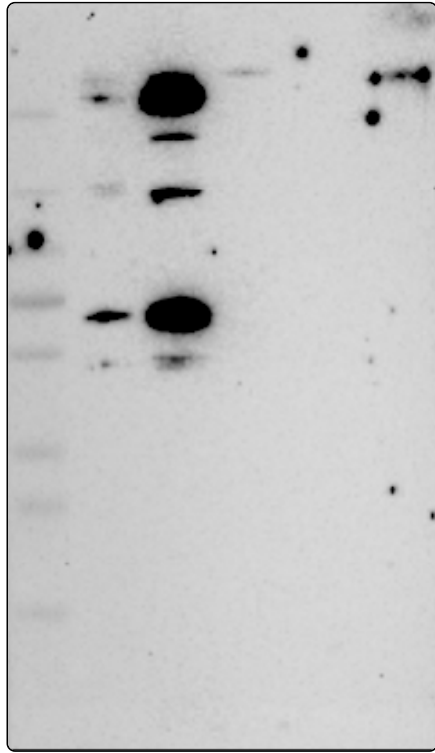
| | |
|--------------------------|--|
| IHC protocol: | HIER pH6, Dilution 1:250 |
| IHC test staining: | Cytoplasmic positivity in intestines, testis, and skeletal muscle. |
| Literature conformance: | Not consistent with gene/protein characterization data |
| Literature significance: | |
| RNA similarity: | Very low consistency between antibody staining and RNA expression data |
| RNA tissue specificity: | Low tissue specificity |
| RNA tissue distribution: | Detected in all |
| IHC Sibling similarity: | Other antibody shows dissimilar IHC staining pattern |

Immunofluorescence



| | |
|-------------------------------------|---|
| IF Overlay: | antibody (green), anti-tubulin (red) and DAPI (blue) |
| IF main location: | Plasma membrane - 7: Approved (auto) |
| IF additional location: | Nucleoli fibrillar center - 7: Approved (auto) |
| IF approved for publication on HPA: | No |
| IF in THP-1: | Nucleoli Fibrillar center Plasma membrane (Edge) |
| IF in U2OS: | Plasma membrane |

Western blot



| | |
|--------------------------------|---|
| WB Size markers (kDa): | 250, 130, 100, 70, 55, 35, 25, 15, 10 |
| WB Lanes: | Marker (1), RT-4 (2), U-251MG (3), Plasma (4), Liver (5), Tonsil (6) |
| WB Target weight (kDa): | 26, 35, 58, 62, 64, 65 |
| WB Validation: | Supported (Band of predicted size in kDa (+/-20%) with additional bands present.) |