

CPTC-SERPINB3-2 (CAB080099)

Uniprot ID: [P48594](#)

Protein name: SPB4_HUMAN

Full name: Serpin B4

Tissue specificity: Squamous cells.

Function: May act as a protease inhibitor to modulate the host immune response against tumor cells.

Subcellular location:

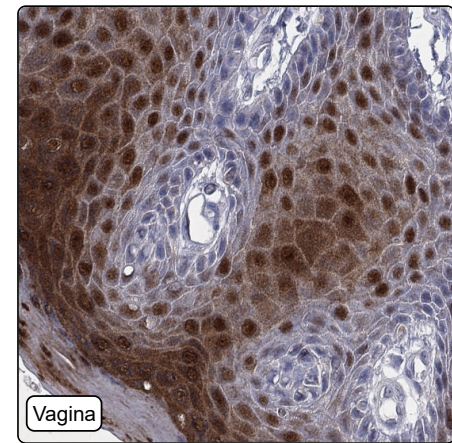
Cytoplasm (*experimental evidence*)

NOTE: Seems to also be secreted in plasma by cancerous cells but at a low level.

Protein existence: Experimental evidence at protein level

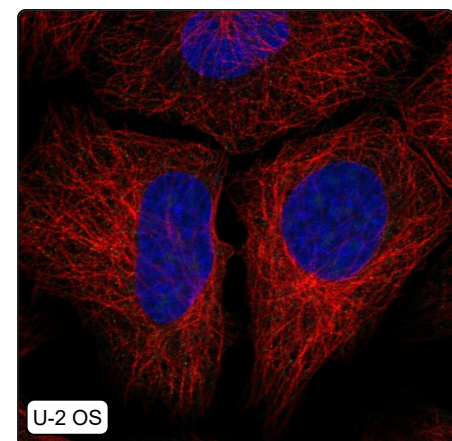
Comment:

Immunohistochemistry



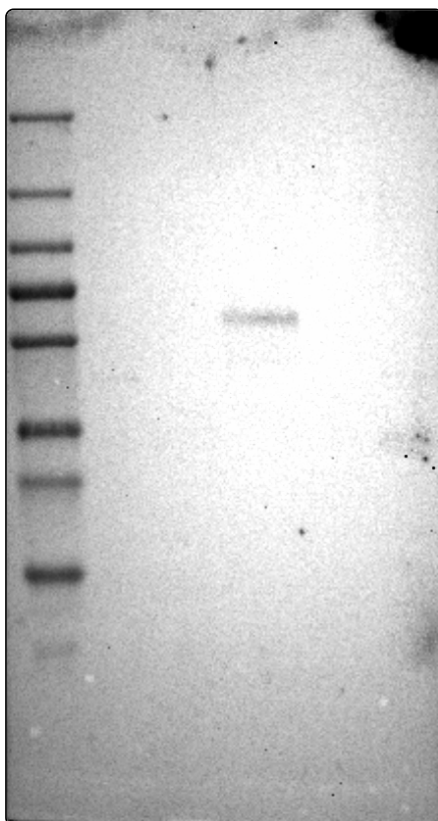
IHC protocol:	HIER pH6, Dilution 1:3000
IHC test staining:	Cytoplasmic and nuclear positivity in squamous cells.
Literature conformance:	Partly consistent with extensive gene/protein characterization data
Literature significance:	
RNA similarity:	High consistency between antibody staining and RNA expression data
RNA tissue specificity:	Group enriched (cervix,esophagus,vagina)
RNA tissue distribution:	Detected in some
IHC Sibling similarity:	Other antibody shows similar IHC staining pattern

Immunofluorescence



IF Overlay:	antibody (green), anti-tubulin (red) and DAPI (blue)
IF main location:	
IF additional location:	
IF approved for publication on HPA:	No
IF in SiHa:	Negative
IF in SK-MEL-30:	Negative
IF in U-2 OS:	Negative

Western blot



WB Size markers (kDa):	250, 130, 100, 70, 55, 35, 25, 15, 10
WB Lanes:	Marker (1), RT4 (2), U-251 MG (3), Plasma (4), Liver (5), Tonsil (6)
WB Target weight (kDa):	24, 42, 45
WB Validation:	Uncertain (Single band differing more than +/-20% from predicted size in kDa and not supported by experimental and/or bioinformatic data.)