

# CPTC-ZEB1-3 (CAB079944)

Uniprot ID: [P37275](#)

Protein name: ZEB1\_HUMAN

Full name: Zinc finger E-box-binding homeobox 1

**Tissue specificity:** Colocalizes with SMARCA4/BRG1 in E-cadherin-negative cells from established lines, and stroma of normal colon as well as in de-differentiated epithelial cells at the invasion front of colorectal carcinomas (at protein level). Expressed in heart and skeletal muscle, but not in liver, spleen, or pancreas.

**Function:** Acts as a transcriptional repressor. Inhibits interleukin-2 (IL-2) gene expression. Enhances or represses the promoter activity of the ATP1A1 gene depending on the quantity of cDNA and on the cell type. Represses E-cadherin promoter and induces an epithelial-mesenchymal transition (EMT) by recruiting SMARCA4/BRG1. Represses BCL6 transcription in the presence of the corepressor CTBP1. Positively regulates neuronal differentiation. Represses RCOR1 transcription activation during neurogenesis. Represses transcription by binding to the E box (5'-CANNTG-3'). Promotes tumorigenicity by repressing stemness-inhibiting microRNAs.

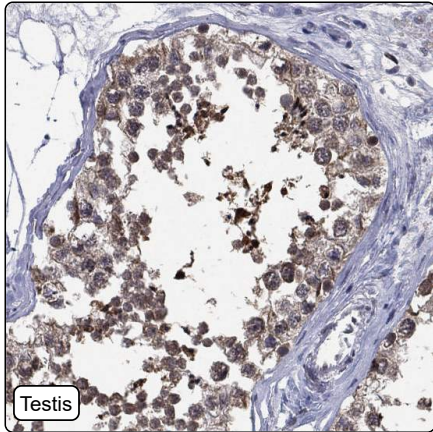
**Subcellular location:**

Nucleus (*experimental evidence*)

**Protein existence:** Experimental evidence at protein level

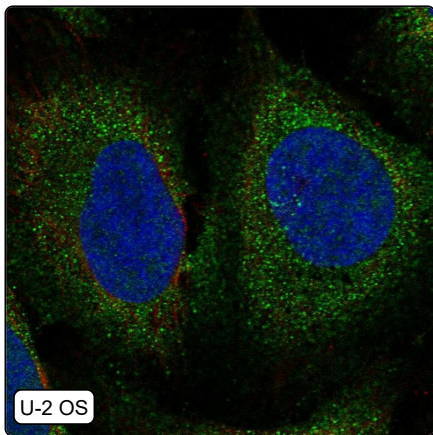
Comment:

## Immunohistochemistry



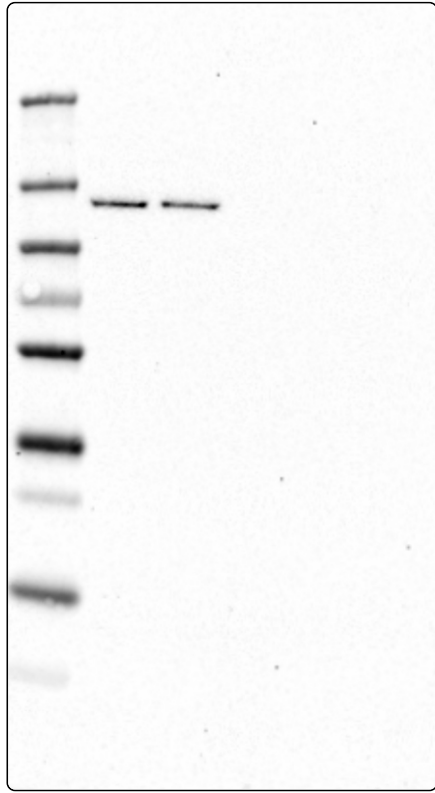
IHC protocol:	HIER pH6, Dilution 1:250
IHC test staining:	Weak to moderate cytoplasmic positivity in testis and gastrointestinal tract. Remaining tissues were negative.
Literature conformance:	Not consistent with gene/protein characterization data
Literature significance:	
RNA consistency:	Not consistent with RNA expression data
IHC Sibling similarity:	Other antibody shows dissimilar IHC staining pattern
IHC fail comment:	ANTIBODY FAILED: Improbable histological location, Not consistent with RNA

## Immunofluorescence



IF Overlay:	antibody (green), anti-tubuline (red) and DAPI (blue)
IF main location:	Cytosol - 12: <b>Uncertain</b> (auto)
IF additional location:	
IF Antibody score:	Failed IF
IF in A549:	Negative
IF in RH-30:	Negative
IF in U-2 OS:	Cytosol

# Western blot



<b>WB Size markers (kDa):</b>	250, 130, 100, 70, 55, 35, 25, 15, 10
<b>WB Lanes:</b>	Marker (1), RT4 (2), U-251 MG (3), Plasma (4), Liver (5), Tonsil (6)
<b>WB Target weight (kDa):</b>	30, 31, 33, 33, 117, 122, 122, 124, 124
<b>WB Validation:</b>	Supported (Single band corresponding to the predicted size in kDa (+/-20%.))