

# CPTC-SLC31A2-1 (CAB080265)

**Uniprot ID:** [O15432](#)

**Protein name:** COPT2\_HUMAN

**Full name:** Probable low affinity copper uptake protein 2

**Tissue specificity:** Ubiquitous.

**Function:** Involved in low-affinity copper uptake.

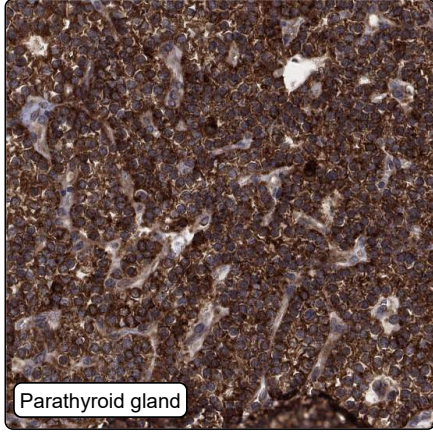
**Subcellular location:**

Membrane (*curator inference*) (Topo: Multi-pass membrane protein (*curator inference*))

**Protein existence:** Experimental evidence at protein level

**Comment:**

## Immunohistochemistry



<b>IHC protocol:</b>	HIER pH6, Dilution 1:800
<b>IHC test staining:</b>	Cytoplasmic positivity in most tissues.
<b>Literature conformance:</b>	Partly consistent with gene/protein characterization data
<b>Literature significance:</b>	Limited
<b>RNA similarity:</b>	Medium consistency between antibody staining and RNA expression data
<b>RNA tissue specificity:</b>	Group enriched (parathyroid gland,salivary gland)
<b>RNA tissue distribution:</b>	Detected in many
<b>IHC Sibling similarity:</b>	Other antibody shows partly similar IHC staining pattern
<b>Reliability score:</b>	Supported
<b>APE summary:</b>	Cytoplasmic expression in most tissues.
<b>APE explanatory sentences:</b>	Medium consistency between antibody staining and RNA expression data. Presumed off target binding observed and disregarded.
<b>Orthogonal validation:</b>	No
<b>Independent validation:</b>	No
<b>IHC Annotation summary:</b>	Most normal tissues showed moderate to strong cytoplasmic positivity. A few cases of most cancers showed weak to moderate cytoplasmic positivity. Testis cancers were negative.