

CPTC-FAS-1 (CAB079985)

Uniprot ID: [P25445](#)

Protein name: TNR6_HUMAN

Full name: Tumor necrosis factor receptor superfamily member 6

Tissue specificity: Isoform 1 and isoform 6 are expressed at equal levels in resting peripheral blood mononuclear cells. After activation there is an increase in isoform 1 and decrease in the levels of isoform 6.

Function: Receptor for TNFSF6/FASLG. The adapter molecule FADD recruits caspase-8 to the activated receptor. The resulting death-inducing signaling complex (DISC) performs caspase-8 proteolytic activation which initiates the subsequent cascade of caspases (aspartate-specific cysteine proteases) mediating apoptosis. FAS-mediated apoptosis may have a role in the induction of peripheral tolerance, in the antigen-stimulated suicide of mature T-cells, or both. The secreted isoforms 2 to 6 block apoptosis (in vitro).

Subcellular location:

Isoform 1:

Cell membrane (*experimental evidence*) (Topo: Single-pass type I membrane protein (*curator inference*))

Membrane raft (*experimental evidence*)

Isoform 2:

Secreted

Isoform 3:

Secreted

Isoform 4:

Secreted

Isoform 5:

Secreted

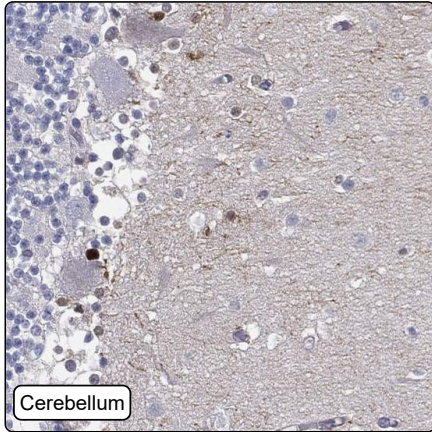
Isoform 6:

Secreted

Protein existence: Experimental evidence at protein level

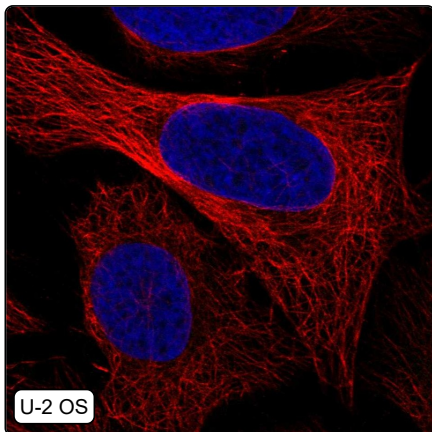
Comment:

Immunohistochemistry



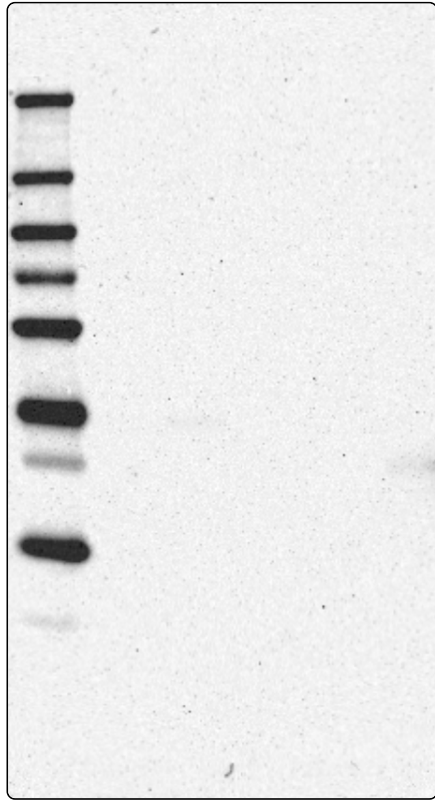
IHC protocol:	HIER pH6, Dilution 1:250
IHC test staining:	Weak positivity in neural processes. Remaining tissues were essentially negative.
Literature conformance:	Not consistent with gene/protein characterization data
Literature significance:	
RNA consistency:	Not consistent with RNA expression data
IHC Sibling similarity:	Other antibody shows dissimilar IHC staining pattern
IHC fail comment:	ANTIBODY FAILED: Improbable histological location, Not consistent with RNA

Immunofluorescence



IF Overlay:	antibody (green), anti-tubuline (red) and DAPI (blue)
IF main location:	
IF additional location:	
IF Antibody score:	Failed IF
IF in A549:	Negative
IF in HEK 293:	Negative
IF in U-2 OS:	Negative

Western blot



WB Size markers (kDa):	250, 130, 100, 70, 55, 35, 25, 15, 10
WB Lanes:	Marker (1), RT4 (2), U-251 MG (3), Plasma (4), Liver (5), Tonsil (6)
WB Target weight (kDa):	25, 26, 35, 38
WB Validation:	Supported (Single band corresponding to the predicted size in kDa (+/-20%.))