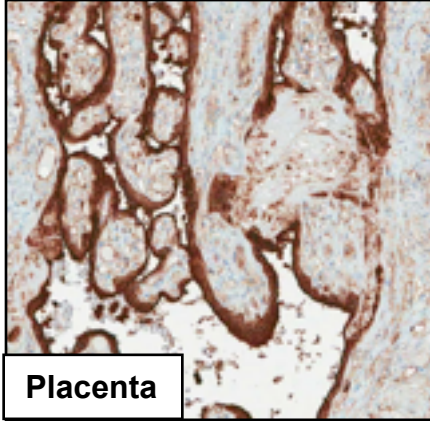


Annexin A1

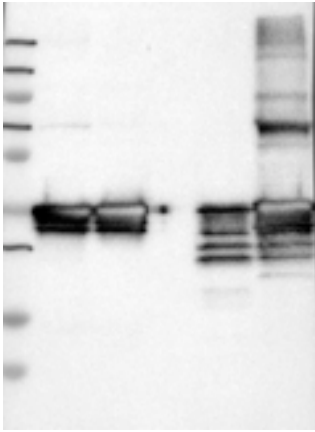
ANXA1-2 (CAB035988)



Immunohistochemistry

IHC protocol: HIER pH 6, Dilution 1:20000

IHC test staining: Cytoplasmic and membranous staining in several tissues, e.g. placenta, prostate, glomeruli and inflammatory cells.



Western blot

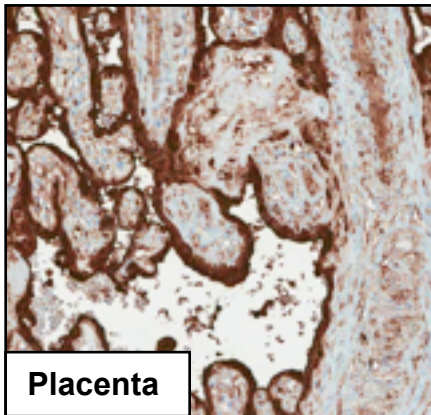
WB Size markers (kDa): 230, 130, 95, 72, 56, 36, 28, 17, 11

WB Lanes: Marker(1), RT-4(2), U251 MG(3), Plasma(4), Liver (5), Tonsil(6)

WB Target weight (kDa): 39, 23, 13

WB Validation: Supportive (Band of predicted size in kDa (+/-20%) with additional bands present)

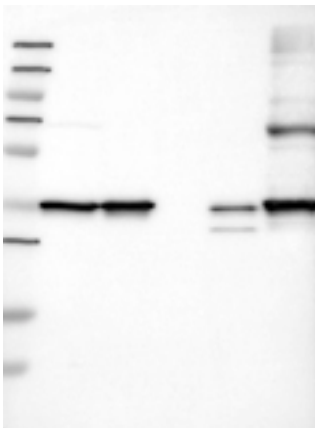
ANXA1-3 (CAB035989)



Immunohistochemistry

IHC protocol: HIER pH 6, Dilution 1:15000

IHC test staining: Cytoplasmic and membranous staining in several tissues, e.g. placenta, prostate, glomeruli and inflammatory cells.



Western blot

WB Size markers (kDa): 230, 130, 95, 72, 56, 36, 28, 17, 11

WB Lanes: Marker(1), RT-4(2), U251 MG(3), Plasma(4), Liver (5), Tonsil(6)

WB Target weight (kDa): 39, 23, 13

WB Validation: Supportive (Band of predicted size in kDa (+/-20%) with additional bands present)