

# CPTC-SLC31A1-1 (CAB080264)

Uniprot ID: [O15431](#)

Protein name: COPT1\_HUMAN

Full name: High affinity copper uptake protein 1

Function: High-affinity, saturable copper transporter involved in dietary copper uptake.

Subcellular location:

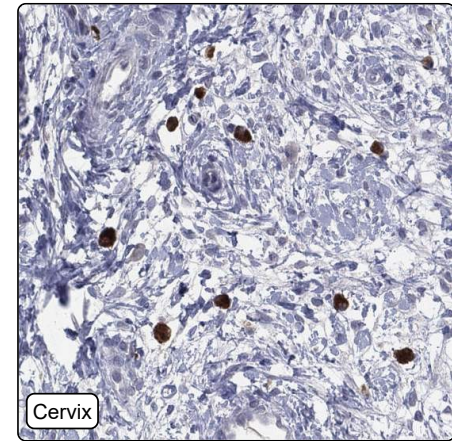
Cell membrane (Topo: Multi-pass membrane protein)

NOTE: Localizes to the apical membrane in intestinal epithelial cells.

Protein existence: Experimental evidence at protein level

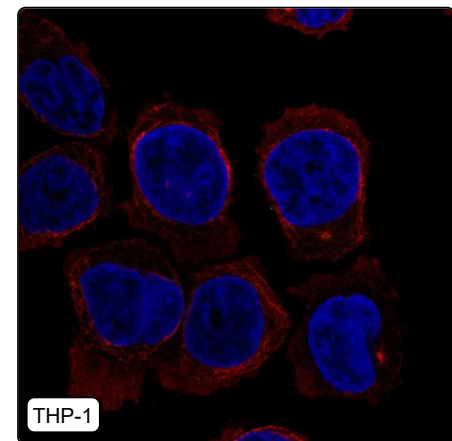
Comment:

## Immunohistochemistry



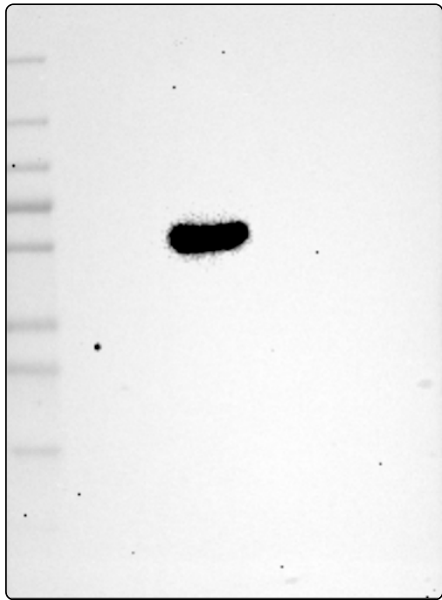
IHC protocol:	HIER pH6, Dilution 1:325
IHC test staining:	Positivity in a subset of immune cells.
Literature conformance:	Not consistent with gene/protein characterization data
Literature significance:	
RNA similarity:	Very low consistency between antibody staining and RNA expression data
RNA tissue specificity:	Tissue enhanced (liver)
RNA tissue distribution:	Detected in all
IHC Sibling similarity:	Other antibody shows dissimilar IHC staining pattern
IHC fail comment:	ANTIBODY FAILED: Improbable histological location,Not consistent with RNA

## Immunofluorescence



IF Overlay:	antibody (green), anti-tubulin (red) and DAPI (blue)
IF main location:	
IF additional location:	
IF approved for publication on HPA:	No
IF in THP-1:	Negative
IF in U-2 OS:	Negative

# Western blot



<b>WB Size markers (kDa):</b>	250, 130, 100, 70, 55, 35, 25, 15, 10
<b>WB Lanes:</b>	Marker (1), RT4 (2), U-251 MG (3), Plasma (4), Liver (5), Tonsil (6)
<b>WB Target weight (kDa):</b>	21
<b>WB Validation:</b>	Uncertain (Single band larger than predicted size in kDa (+20%) but partly supported by experimental and/or bioinformatic data.)