

FAF1-2

Uniprot ID: Q9UNN5

Protein name: FAF1_HUMAN

Full name: FAS-associated factor 1

Protein existence: evidence at protein level

Function: Potentiates but cannot initiate FAS-induced apoptosis.

Three antibodies: FAF-1, FAF-2 and FAF-3 were tested. FAF-2 was selected for full protein profiling.

FAF-1 (CAB072814)

OK



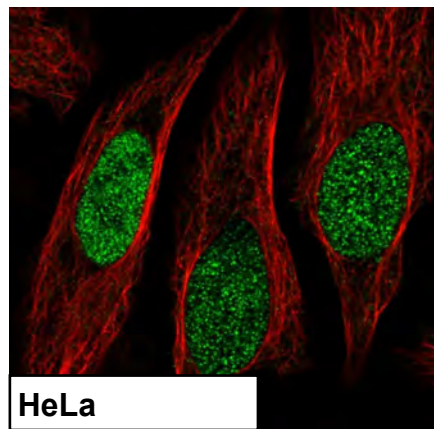
Immunohistochemistry

IHC protocol: HIER pH 6, Dilution 1:25000

IHC test staining: Has a general nuclear and cytoplasmic staining pattern.

IHC Annotators comments

Weak to moderate nuclear positivity was observed in most normal tissues. Additional cytoplasmic and/or luminal membranous staining was seen in few cases. Cells in seminiferous ducts of testis were strongly stained. Liver and glial cells were negative.



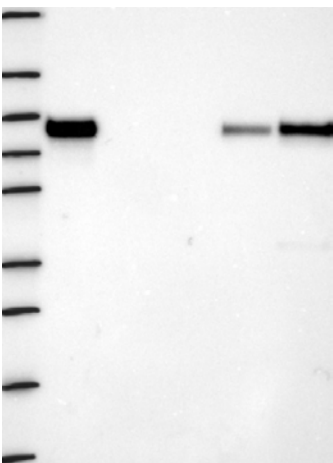
Cancer tissues showed weak to moderate cytoplasmic positivity, with additional cytoplasmic staining in few cases. Hepatocellular carcinomas along with several cases of pancreas cancers and renal cell carcinomas were negative

Immunofluorescence

IF Overlay: antibody (green) and anti-tubuline (red)

IF Localization: Positivity in nucleus

IF Validation: The subcellular location is supported by literature



Western blot

WB Size markers (kDa): 250, 130, 95, 72, 55, 36, 28, 17, 10

WB Lanes: Marker(1), RT-4(2), U251 MG(3), Plasma(4), Liver(5), Tonsil(6)

WB Target weight (kDa): 74.0, 56.0

WB Validation: Supportive (Single band corresponding to the predicted size in kDa (+/-20%))