

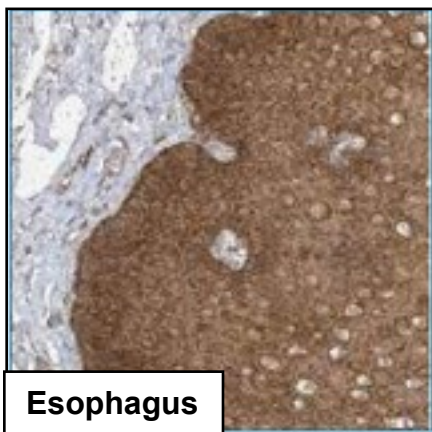
Ubiquitin-conjugating enzyme E2 C

UniProt

Function: Catalyzes the covalent attachment of ubiquitin to other proteins. Acts as an essential factor of the anaphase promoting complex/cyclosome (APC/C), a cell cycle-regulated ubiquitin ligase that controls progression through mitosis. Acts by initiating 'Lys-11'-linked polyubiquitin chains on APC/C substrates, leading to the degradation of APC/C substrates by the proteasome and promoting mitotic exit.

One antibody: UBE2C-1 tested and approved for IHC. UBE2C-1 selected for full protein profiling.

UBE2C-1 (CAB035990)



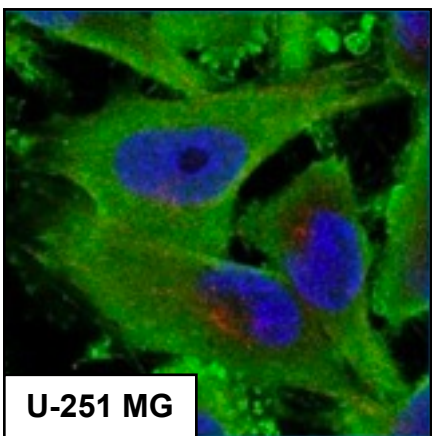
Immunohistochemistry

IHC protocol: HIER pH 6, Dilution 1:130

IHC test staining: Granular cytoplasmic staining in most tissues examined.

IHC Annotators comments

Moderate cytoplasmic staining was observed in normal and malignant tissues. Adrenal gland, renal tubules and bone marrow cells were strongly stained. Most cells in CNS as well as several cases of malignant gliomas were weakly stained or negative.

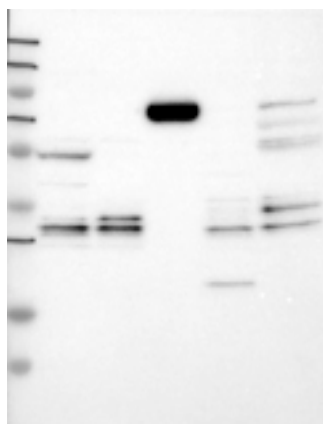


Immunofluorescence

IF Overlay: antibody (green), anti-tubuline (red) and DAPI (blue)

IF Localisation: Staining of plasma membrane and cytoplasm in all three cell lines.

IF Validation: Subcellular localization partly supported by literature or where no literature is available.



Western blot

WB Size markers (kDa): 230, 130, 95, 72, 56, 36, 28, 17, 11

WB Lanes: Marker(1), RT-4(2), U251 MG(3), Plasma(4), Liver(5), Tonsil(6)

WB Target weight (kDa): 20, 17, 16, 5

WB Validation: Not supportive (Weak band of predicted size but with additional bands of higher intensity also present)