

GLO-2 (615A20.1)

Protein: Lactoylglutathione lyase

UniProt

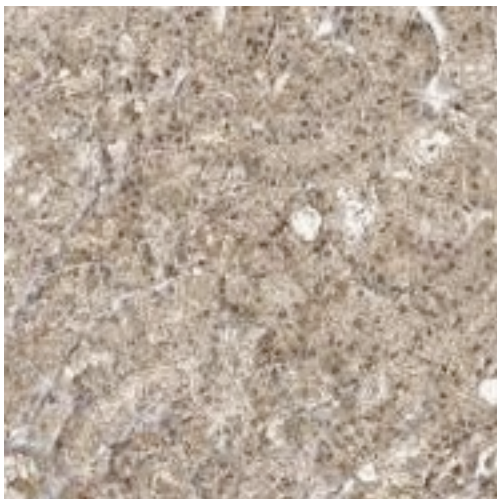
Function: Catalyzes the conversion of hemimercaptal, formed from methylglyoxal and glutathione, to S-lactoylglutathione.

IHC protocol

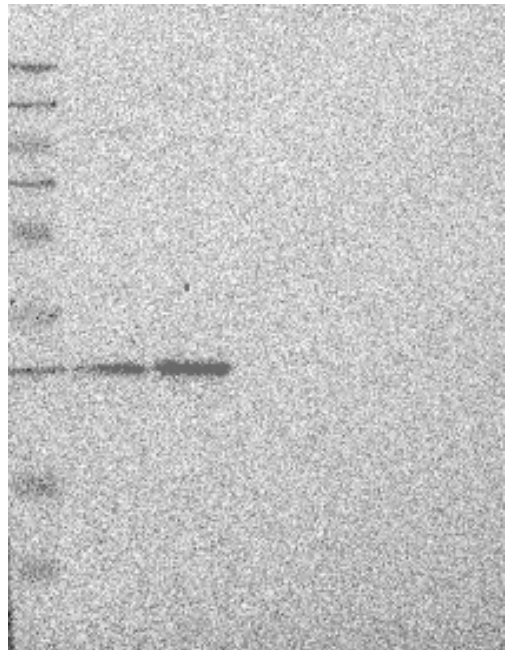
HIER pH 6
Diluted 1:10

IHC comment

Approved for IHC. Weak to moderate cytoplasmic staining. Strongest in e.g. lymphocytes, fallopian tube, skeletal muscle and in some cell lines.



IHC. Stomach



WB. Uncertain (Single band differing more than +/-20% from predicted size in kDa and not supported by experimental and/or bioinformatic data)

Annotators comment

Weak to moderate cytoplasmic and nuclear positivity was observed in most normal and malignant tissues. The liver was negative. Occasional cases of colorectal cancers were strongly stained. Renal, gastric, pancreatic, liver and testicular cancers were negative in most cases.