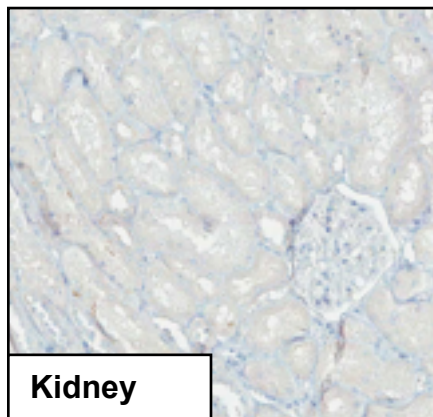


# Methyl-CpG-binding domain protein 1

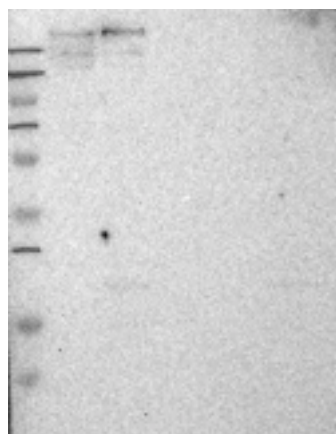
## MBD1-2 (CAB036004)



### Immunohistochemistry

**IHC protocol:** HIER pH 6, Dilution 1:10

**IHC test staining:** Failed due to weak cytoplasmic staining in a few tissues such as testis and fallopian tube. No nuclear staining seen.



### Western blot

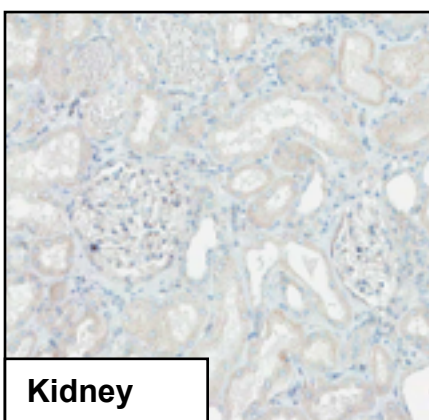
**WB Size markers (kDa):** 230, 130, 95, 72, 56, 36, 28, 17, 11

**WB Lanes:** Marker(1), RT-4(2), U251 MG(3), Plasma(4), Liver(5), Tonsil(6)

**WB Target weight (kDa):** 72, 67, 65, 61, 60, 59, 55, 52

**WB Validation:** Not supportive (Only bands not corresponding to the predicted size)

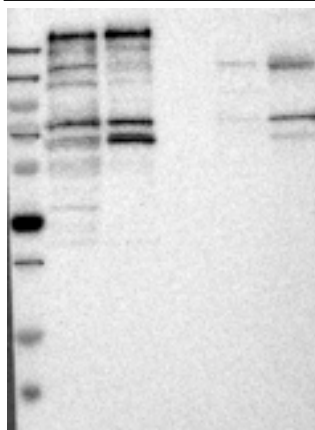
## MBD1-3 (CAB036005)



### Immunohistochemistry

**IHC protocol:** HIER pH 6, Dilution 1:60

**IHC test staining:** Failed due to cytoplasmic staining in e.g. endometrium, testis and fallopian tube. Nuclear membranes in skeletal muscle. Located to centrosomes in lymphoid cells.



### Western blot

**WB Size markers (kDa):** 230, 130, 95, 72, 56, 36, 28, 17, 11

**WB Lanes:** Marker(1), RT-4(2), U251 MG(3), Plasma(4), Liver(5), Tonsil(6)

**WB Target weight (kDa):** 72, 67, 65, 61, 60, 59, 55, 52

**WB Validation:** Not supportive (Weak band of predicted size but with additional bands of higher intensity also present)