

CPTC-CD38-1 (CAB080003)

Uniprot ID: P28907

Protein name: CD38_HUMAN

Full name: ADP-ribosyl cyclase/cyclic ADP-ribose hydrolase 1

Tissue specificity: Expressed at high levels in pancreas, liver, kidney, brain, testis, ovary, placenta, malignant lymphoma and neuroblastoma.

Function: Synthesizes the second messengers cyclic ADP-ribose and nicotinate-adenine dinucleotide phosphate, the former a second messenger for glucose-induced insulin secretion. Also has cADPr hydrolase activity. Also moonlights as a receptor in cells of the immune system.

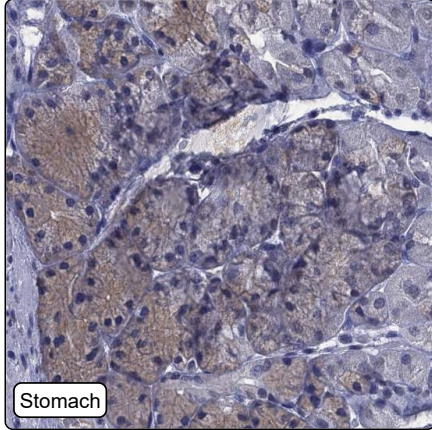
Subcellular location:

Membrane (Topo: Single-pass type II membrane protein)

Protein existence: Experimental evidence at protein level

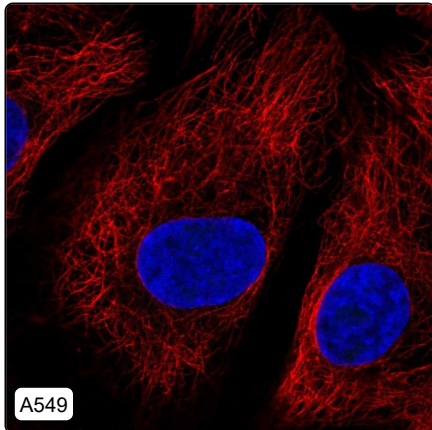
Comment:

Immunohistochemistry



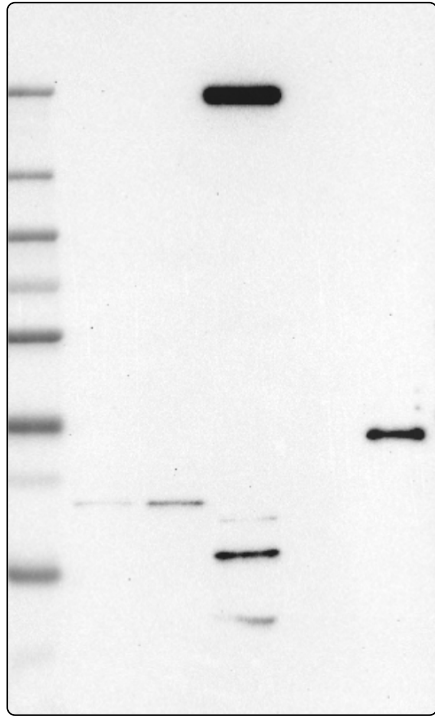
IHC protocol:	HIER pH6, Dilution 1:250
IHC test staining:	Weak cytoplasmic positivity in stomach, remaining tissues were negative with additional plasma positivity.
Literature conformance:	Not consistent with gene/protein characterization data
Literature significance:	Limited
RNA consistency:	Not consistent with RNA expression data
IHC Sibling similarity:	Other antibody shows dissimilar IHC staining pattern
IHC fail comment:	ANTIBODY FAILED: Improbable histological location, Not consistent with RNA

Immunofluorescence



IF Overlay:	antibody (green), anti-tubuline (red) and DAPI (blue)
IF main location:	
IF additional location:	
IF Antibody score:	Failed IF
IF in A549:	Negative
IF in REH:	Negative
IF in U-2 OS:	Negative

Western blot



WB Size markers (kDa):	250, 130, 100, 70, 55, 35, 25, 15, 10
WB Lanes:	Marker (1), RT4 (2), U-251 MG (3), Plasma (4), Liver (5), Tonsil (6)
WB Target weight (kDa):	17, 34
WB Validation:	Uncertain (Weak band of predicted size but with additional bands of higher intensity also present.)