

Chromogranin-A

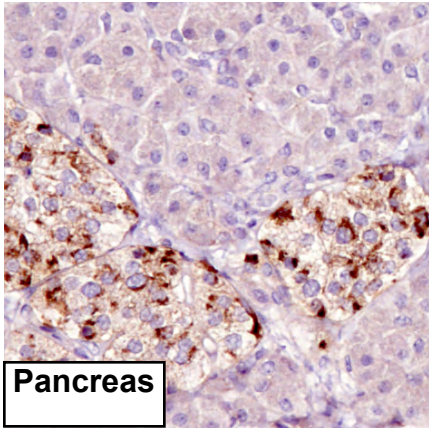
UniProt

Function: Pancreastatin strongly inhibits glucose induced insulin release from the pancreas.

Subcellular location: Secreted. NOTE: Neuroendocrine and endocrine secretory granules.

Three antibodies: CHGA-1, CHGA-2 and CHGA-3 were tested. All three antibodies were approved for IHC. CHGA-2 was selected for full protein profiling.

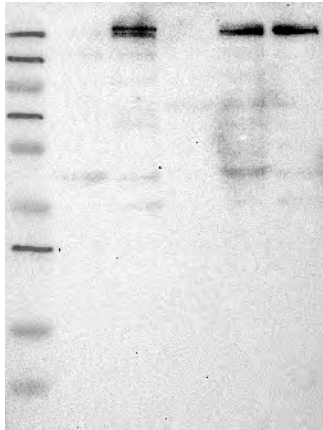
CHGA-3 (CAB040545)



Immunohistochemistry

IHC protocol: HIER pH 6, Dilution 1:200

IHC test staining: Cytoplasmic staining in pancreatic islets and endocrine cells in the intestine. Some staining was also seen in kidney tubules.



Western blot

WB Size markers (kDa): 250, 130, 95, 72, 55, 36, 28, 17, 11

WB Lanes: Marker(1), RT-4(2), U251 MG(3), Plasma(4), Liver(5), Tonsil(6)

WB Target weight (kDa): 51, 40

WB Validation: Non-supportive - Weak band of predicted size but with additional bands of higher intensity also present.