

CPTC-PLIN2-2 (CAB080244)

Uniprot ID: [Q99541](#)

Protein name: PLIN2_HUMAN

Full name: Perilipin-2

Tissue specificity: Milk lipid globules.

Function: Structural component of lipid droplets, which is required for the formation and maintenance of lipid storage droplets.

Subcellular location:

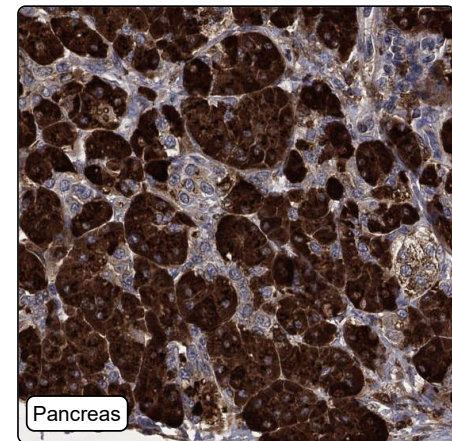
Membrane (*by similarity*) (Topo: Peripheral membrane protein (*by similarity*))

Lipid droplet (*experimental evidence, curator inference*)

Protein existence: Experimental evidence at protein level

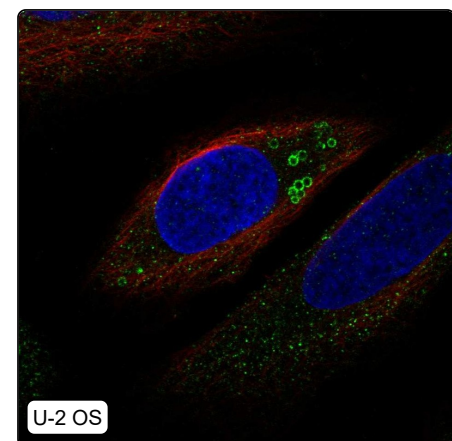
Comment:

Immunohistochemistry



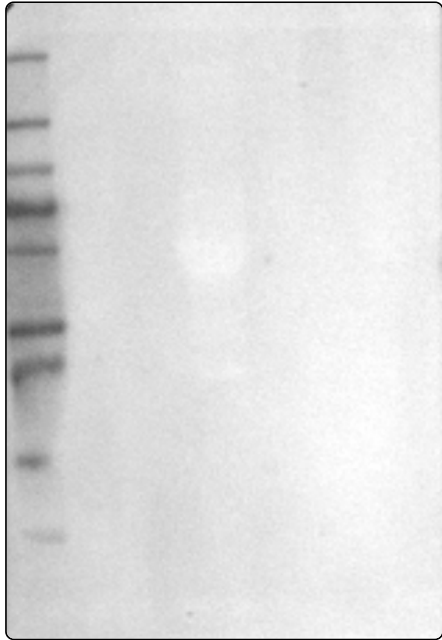
IHC protocol:	HIER pH6, Dilution 1:415
IHC test staining:	Positivity in liver, pancreas and smooth muscle.
Literature conformance:	Not consistent with gene/protein characterization data
Literature significance:	
RNA similarity:	Very low consistency between antibody staining and RNA expression data
RNA tissue specificity:	Tissue enhanced (adipose tissue,liver)
RNA tissue distribution:	Detected in all
IHC Sibling similarity:	Other antibody shows dissimilar IHC staining pattern
IHC fail comment:	ANTIBODY FAILED: Not consistent with RNA

Immunofluorescence



IF Overlay:	antibody (green), anti-tubulin (red) and DAPI (blue)
IF main location:	Lipid droplets - 1 [3]: Supportive (auto)
IF additional location:	
IF approved for publication on HPA:	Yes
IF in THP-1:	Lipid droplets
IF in U-2 OS:	Lipid droplets

Western blot



WB Size markers (kDa):	250, 130, 100, 70, 55, 35, 25, 15, 10
WB Lanes:	Marker (1), RT4 (2), U-251 MG (3), Plasma (4), Liver (5), Tonsil (6)
WB Target weight (kDa):	12, 13, 14, 48
WB Validation:	Uncertain (No bands detected.)