

# CPTC-FHL1-1 (CAB080206)

**Uniprot ID:** [Q13642](#)

**Protein name:** FHL1\_HUMAN

**Full name:** Four and a half LIM domains protein 1

**Tissue specificity:** Isoform 1 is highly expressed in skeletal muscle and to a lesser extent in heart, placenta, ovary, prostate, testis, small intestine, colon and spleen. Expression is barely detectable in brain, lung, liver, kidney, pancreas, thymus and peripheral blood leukocytes. Isoform 2 is expressed in brain, skeletal muscle and to a lesser extent in heart, colon, prostate and small intestine. Isoform 3 is expressed in testis, heart and skeletal muscle.

**Function:** May have an involvement in muscle development or hypertrophy.

**Subcellular location:**

**Isoform 1:**

Cytoplasm

**Isoform 2:**

Nucleus

Cytoplasm > Cytosol

**NOTE:** Predominantly nuclear in myoblasts but is cytosolic in differentiated myotubes.

**Isoform 3:**

Cytoplasm

Nucleus

**Protein existence:** Experimental evidence at protein level

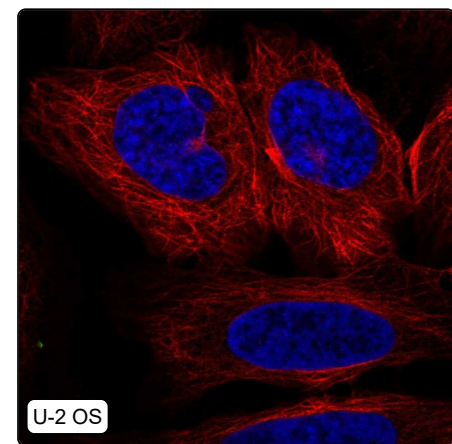
**Comment:**

## Immunohistochemistry



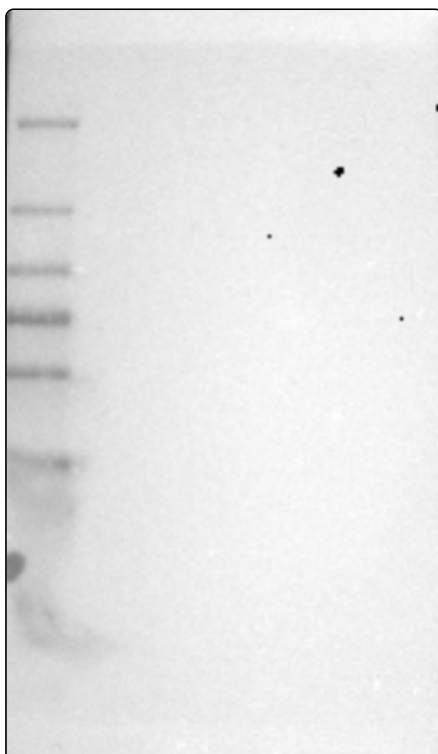
<b>IHC protocol:</b>	HIER pH6, Dilution 1:400
<b>IHC test staining:</b>	Positivity in squamous epithelial cells.
<b>Literature conformance:</b>	Not consistent with gene/protein characterization data
<b>Literature significance:</b>	
<b>RNA similarity:</b>	Very low consistency between antibody staining and RNA expression data
<b>RNA tissue specificity:</b>	Group enriched (skeletal muscle,tongue)
<b>RNA tissue distribution:</b>	Detected in all
<b>IHC Sibling similarity:</b>	Other antibody shows dissimilar IHC staining pattern
<b>IHC fail comment:</b>	ANTIBODY FAILED: Not consistent with RNA

## Immunofluorescence



<b>IF Overlay:</b>	antibody (green), anti-tubulin (red) and DAPI (blue)
<b>IF main location:</b>	
<b>IF additional location:</b>	
<b>IF approved for publication on HPA:</b>	No
<b>IF in THP-1:</b>	Negative
<b>IF in U-2 OS:</b>	Negative

# Western blot



<b>WB Size markers (kDa):</b>	250, 130, 100, 70, 55, 35, 25, 15, 10
<b>WB Lanes:</b>	Marker (1), RT4 (2), U-251 MG (3), Plasma (4), Liver (5), Tonsil (6)
<b>WB Target weight (kDa):</b>	2, 4, 8, 8, 9, 16, 16, 17, 17, 18, 20, 22, 23, 23, 24, 24, 24, 24, 29, 29, 32, 32, 32, 32, 32, 32, 32, 32, 34, 35, 36, 36
<b>WB Validation:</b>	Uncertain (No bands detected.)