

Uniprot ID: [P11387](#)

Protein name: TOP1_HUMAN

TOP1-1

Full name: DNA topoisomerase 1

Protein existence: evidence at protein level

Function: The reaction catalyzed by topoisomerases leads to the conversion of one topological isomer of DNA to another. Regulates the alternative splicing of tissue factor (F3) pre-mRNA in endothelial cells.

Subcellular location: Nucleus; Nucleolus. Nucleus; Nucleoplasm. *NOTE*: Diffuse nuclear localization with some enrichment in nucleoli. On CPT treatment, cleared from nucleoli into nucleoplasm. Sumoylated forms found in both nucleoplasm and nucleoli.

Tissue specificity: Endothelial cells.

Three antibodies: TOP1-1, TOP1-2 and TOP1-3 were tested. All three antibodies were failed for IHC.

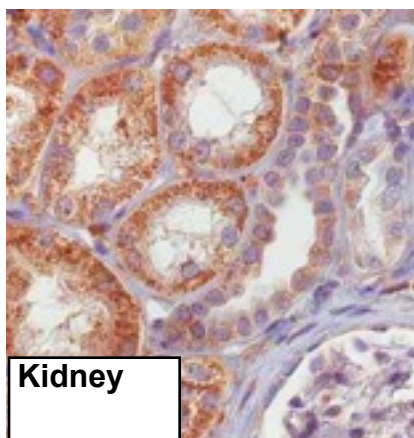
TOP1-1 (CAB047347)

Fail

Immunohistochemistry

IHC protocol: HIER pH 6, Dilution 1:700

IHC test staining: Cytoplasmic staining in many tissues, conflicting with literature.



Kidney

Western blot

WB Size markers (kDa): 250, 130, 95, 72, 55, 36, 28, 17, 11

WB Lanes: Marker(1), RT-4(2), U251 MG(3), Plasma(4), Liver(5), Tonsil(6)

WB Target weight (kDa): 91

WB Validation: Not supportive (Only bands not corresponding to the predicted size)

