

# Glutathione S-transferase mu 2 (muscle)

## UniProt

**Function:** Conjugation of reduced glutathione to a wide number of exogenous and endogenous hydrophobic electrophiles.

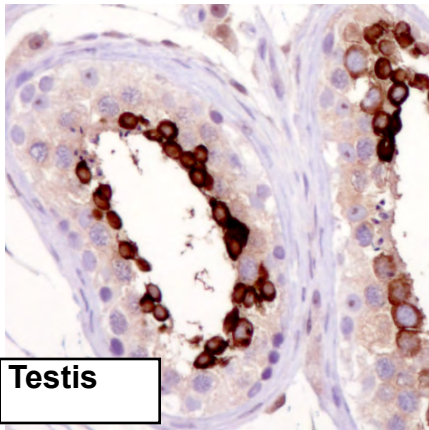
**Subcellular location:** Cytoplasm.

**Tissue specificity:** Muscle.

Three antibodies: GSTMu2-1, GSTMu2-2 and GSTMu2-3 were tested. GSTMu2-2 was approved for IHC and selected for full protein profiling.

## GSTMu2-1 (CAB040546)

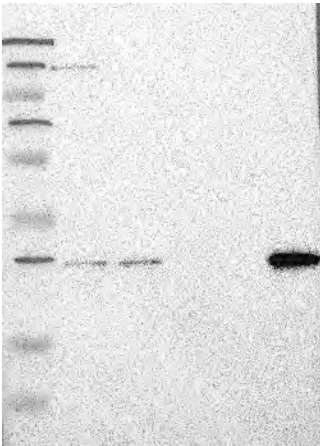
Failed for IHC



### Immunohistochemistry

**IHC protocol:** HIER pH 6, Dilution 1:6000

**IHC test staining:** Cytoplasmic staining with high expression in testes, liver and tonsil, but weaker in skeletal muscle. Additional nuclear staining in skin and liver.



### Western blot

**WB Size markers (kDa):** 250, 130, 95, 72, 55, 36, 28, 17, 11

**WB Lanes:** Marker(1), RT-4(2), U251 MG(3), Plasma(4), Liver(5), Tonsil(6)

**WB Target weight (kDa):** 28, 26, 23, 21

**WB Validation:** Supportive - Band of predicted size in kDa (+/-20%) with additional bands present.