

Crystallin, alpha B

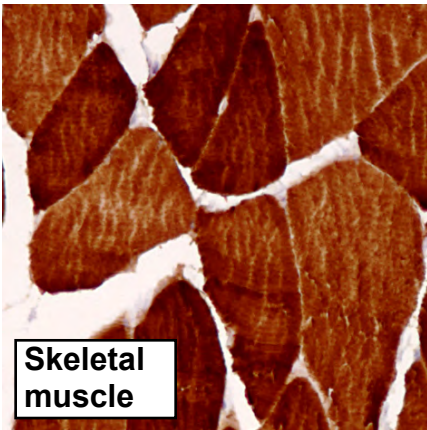
UniProt

Function: May contribute to the transparency and refractive index of the lens.

Tissue specificity: Lens as well as other tissues.

Three antibodies: CRYAB-1, CRYAB-2 and CRYAB-3 were tested. All three antibodies were approved for IHC. CRYAB-1 was selected for full protein profiling.

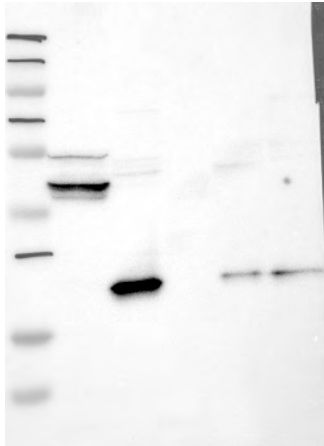
CRYAB-3 (CAB040562)



Immunohistochemistry

IHC protocol: HIER pH 6, Dilution 1:1500

IHC test staining: Cytoplasmic staining in selected tissues, eg lens, skeletal muscle, CNS and placenta.



Western blot

WB Size markers (kDa): 250, 130, 95, 72, 55, 36, 28, 17, 11

WB Lanes: Marker(1), RT-4(2), U251 MG(3), Plasma(4), Liver(5), Tonsil(6)

WB Target weight (kDa): 20

WB Validation: Supportive - Band of predicted size in kDa (+/-20%) with additional bands present.