

Uniprot ID: [O75496](#)

Protein name: GEMI_HUMAN

GMNN-1

Full name: Geminin

Protein existence: evidence at protein level

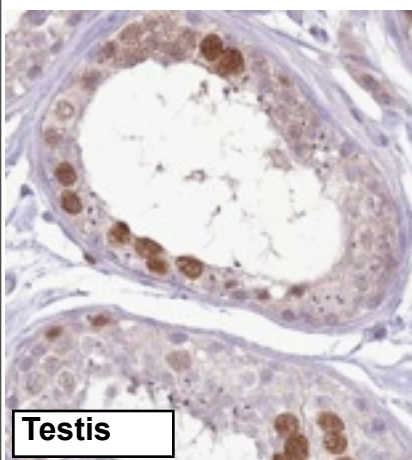
Function: Inhibits DNA replication by preventing the incorporation of MCM complex into pre-replication complex (pre-RC). It is degraded during the mitotic phase of the cell cycle. Its destruction at the metaphase-anaphase transition permits replication in the succeeding cell cycle.

Subcellular location: Cytoplasm. Nucleus. *NOTE:* Mainly cytoplasmic but can be relocalized to the nucleus.

Three antibodies: GMNN-1, GMNN-2 and GMNN-3 were tested. GMNN-1 was approved for IHC and selected for full protein profiling.

GMNN-1 (CAB047327)

OK

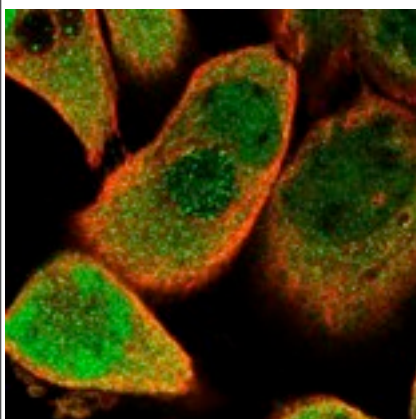


Immunohistochemistry

IHC protocol: HIER pH 6, Dilution 1:12000

IHC test staining: Nuclear staining in testis, reaction centra and deep crypts of GI, seems to stain dividing cells.

IHC Annotators comments

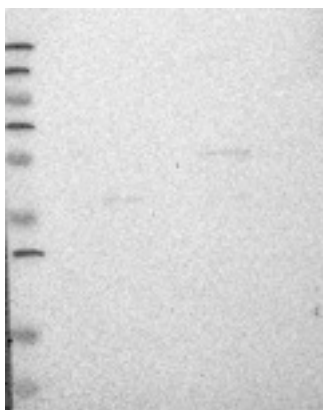


Immunofluorescence

IF Overlay: antibody (green), anti-tubuline (red) and DAPI (blue)

IF Localization: Staining of cytoplasm in all three cell lines with additional staining of nucleus in A-431.

IF Validation: The subcellular location is supported by literature.



Western blot

WB Size markers (kDa): 250, 130, 95, 72, 55, 36, 28, 17, 11

WB Lanes: Marker(1), RT-4(2), U251 MG(3), Plasma(4), Liver(5), Tonsil(6)

WB Target weight (kDa): 24, 7, 21, 11, 24

WB Validation: Not supportive (Weak band of predicted size but with additional bands of higher intensity also present)