

# CPTC-ATRIP-1 (CAB080166)

Uniprot ID: [Q8WXE1](#)

Protein name: ATRIP\_HUMAN

Full name: ATR-interacting protein

Tissue specificity: Ubiquitous.

Function: Required for checkpoint signaling after DNA damage. Required for ATR expression, possibly by stabilizing the protein.

Subcellular location:

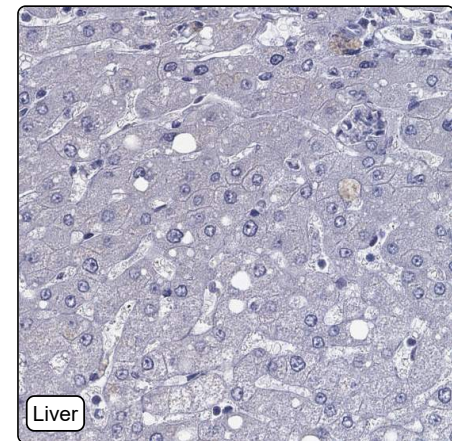
Nucleus (*experimental evidence*)

NOTE: Redistributes to discrete nuclear foci upon DNA damage.

Protein existence: Experimental evidence at protein level

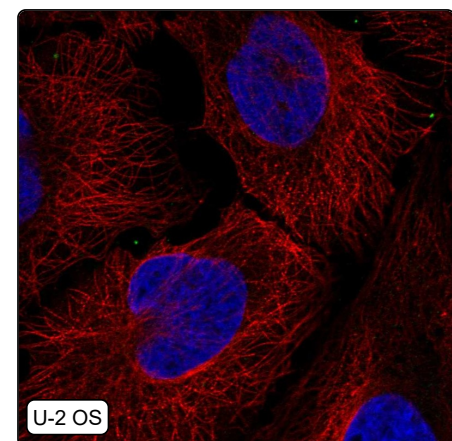
Comment:

## Immunohistochemistry



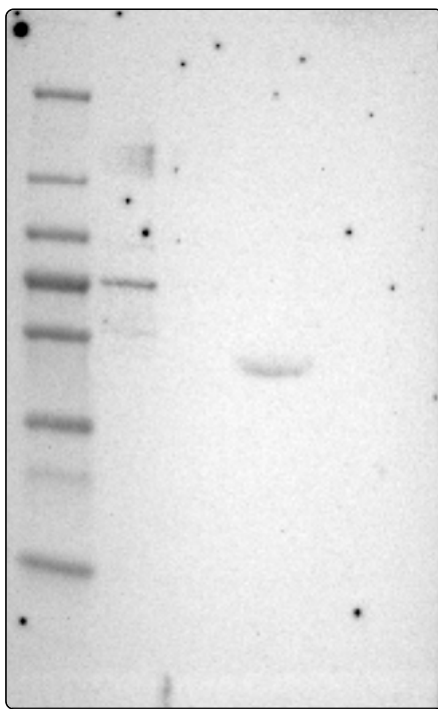
IHC protocol:	HIER pH6, Dilution 1:500
IHC test staining:	Negative in all tissues.
Literature conformance:	Not consistent with gene/protein characterization data
Literature significance:	
RNA similarity:	Very low consistency between antibody staining and RNA expression data
RNA tissue specificity:	Tissue enhanced (testis)
RNA tissue distribution:	Detected in all
IHC Sibling similarity:	Other antibody shows dissimilar IHC staining pattern
IHC fail comment:	ANTIBODY FAILED: Not consistent with RNA

## Immunofluorescence



IF Overlay:	antibody (green), anti-tubulin (red) and DAPI (blue)
IF main location:	
IF additional location:	
IF approved for publication on HPA:	No
IF in THP-1:	Negative
IF in U-2 OS:	Negative

# Western blot



<b>WB Size markers (kDa):</b>	250, 130, 100, 70, 55, 35, 25, 15, 10
<b>WB Lanes:</b>	Marker (1), RT4 (2), U-251 MG (3), Plasma (4), Liver (5), Tonsil (6)
<b>WB Target weight (kDa):</b>	22, 72, 76, 83, 86
<b>WB Validation:</b>	Supported (Band of predicted size in kDa (+/-20%) with additional bands present.)