

CPTC-PSMB10-1 (CAB080377)

Uniprot ID: P40306

Protein name: PSB10_HUMAN

Full name: Proteasome subunit beta type-10

Function: The proteasome is a multicatalytic proteinase complex which is characterized by its ability to cleave peptides with Arg, Phe, Tyr, Leu, and Glu adjacent to the leaving group at neutral or slightly basic pH. The proteasome has an ATP-dependent proteolytic activity. This subunit is involved in antigen processing to generate class I binding peptides.

Subcellular location:

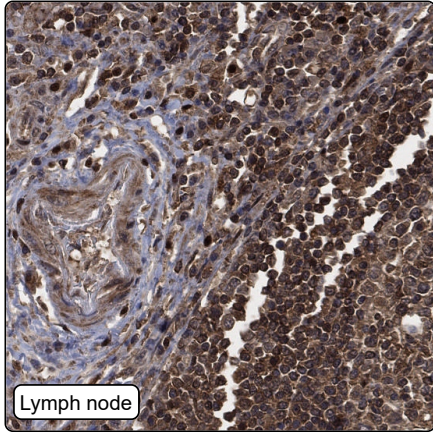
Cytoplasm (*match to sequence model*)

Nucleus (*by similarity*)

Protein existence: Experimental evidence at protein level

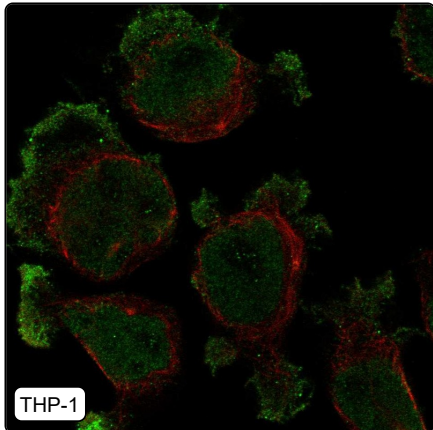
Comment: Staining agree with HPA antibodies./Charlotte

Immunohistochemistry



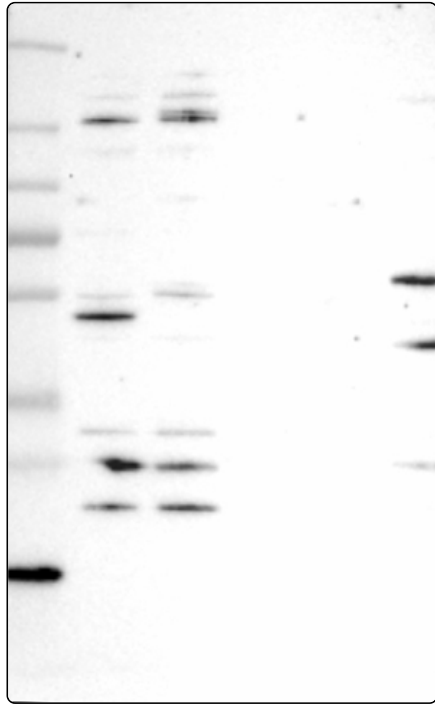
IHC protocol:	HIER pH6, Dilution 1:250
IHC test staining:	Cytoplasmic positivity in most tissues.
Literature conformance:	Partly consistent with extensive gene/protein characterization data
Literature significance:	
RNA similarity:	Very low consistency between antibody staining and RNA expression data
RNA tissue specificity:	Tissue enhanced (lymphoid tissue)
RNA tissue distribution:	Detected in many
IHC Sibling similarity:	Other antibody shows partly similar IHC staining pattern

Immunofluorescence



IF Overlay:	antibody (green), anti-tubulin (red) and DAPI (blue)
IF main location:	Plasma membrane - 7: Approved (auto)
IF additional location:	Nucleoplasm - 7: Approved (auto)
IF approved for publication on HPA:	No
IF in THP-1:	Nucleoplasm Plasma membrane
IF in U2OS:	Plasma membrane

Western blot



WB Size markers (kDa):	250, 130, 100, 70, 55, 35, 25, 15, 10
WB Lanes:	Marker (1), RT-4 (2), U-251MG (3), Plasma (4), Liver (5), Tonsil (6)
WB Target weight (kDa):	14, 29
WB Validation:	Supported (Band of predicted size in kDa (+/-20%) with additional bands present.)