

CPTC-LY75-1 (CAB080350)

Uniprot ID: [O60449](#)

Protein name: LY75_HUMAN

Full name: Lymphocyte antigen 75

Tissue specificity: Expressed in spleen, thymus, colon and peripheral blood lymphocytes. Detected in myeloid and B-lymphoid cell lines. Isoform 2 and isoform 3 are expressed in malignant Hodgkin lymphoma cells called Hodgkin and Reed-Sternberg (HRS) cells.

Function: Acts as an endocytic receptor to direct captured antigens from the extracellular space to a specialized antigen-processing compartment (By similarity). Causes reduced proliferation of B-lymphocytes.

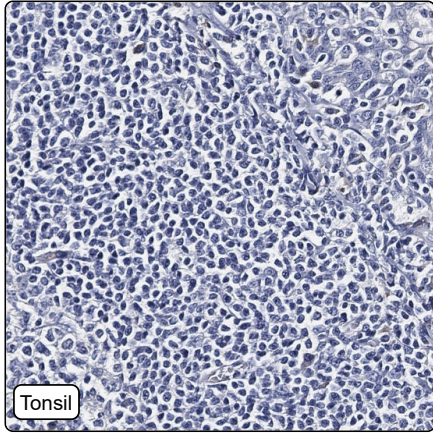
Subcellular location:

Membrane (by similarity) (Topo: Single-pass type I membrane protein (by similarity))

Protein existence: Experimental evidence at protein level

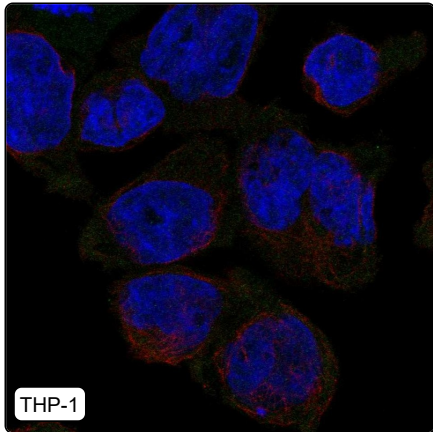
Comment:

Immunohistochemistry



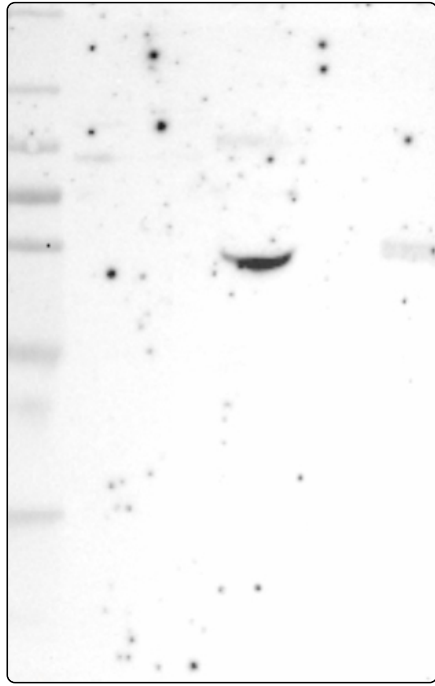
IHC protocol:	HIER pH6, Dilution 1:300
IHC test staining:	No positivity was observed.
Literature conformance:	Not consistent with gene/protein characterization data
Literature significance:	
RNA similarity:	Very low consistency between antibody staining and RNA expression data
RNA tissue specificity:	Tissue enriched (lymphoid tissue)
RNA tissue distribution:	Detected in many
IHC Sibling similarity:	Other antibody shows dissimilar IHC staining pattern

Immunofluorescence



IF Overlay:	antibody (green), anti-tubulin (red) and DAPI (blue)
IF main location:	
IF additional location:	
IF approved for publication on HPA:	No
IF in THP-1:	Negative

Western blot



WB Size markers (kDa):	250, 130, 100, 70, 55, 35, 25, 15, 10
WB Lanes:	Marker (1), RT-4 (2), U-251MG (3), Plasma (4), Liver (5), Tonsil (6)
WB Target weight (kDa):	198
WB Validation:	Uncertain (Only bands not corresponding to the predicted size.)