

Uniprot ID: [P62258](#)

Protein name: 1433E_HUMAN **YWHAE-1**

Full name: 14-3-3 protein epsilon

Protein existence: evidence at protein level

Function: Adapter protein implicated in the regulation of a large spectrum of both general and specialized signaling pathways. Binds to a large number of partners, usually by recognition of a phosphoserine or phosphothreonine motif. Binding generally results in the modulation of the activity of the binding partner.

Subcellular location: Cytoplasm (by similarity). Melanosome. *NOTE:* Identified by mass spectrometry in melanosome fractions from stage I to stage IV.

Three antibodies: YWHAE-1, YWHAE-2 and YWHAE-3 were tested. All three antibodies were approved for IHC. YWHAE-1 was selected for full protein profiling.

YWHAE-1 (CAB047350)

OK

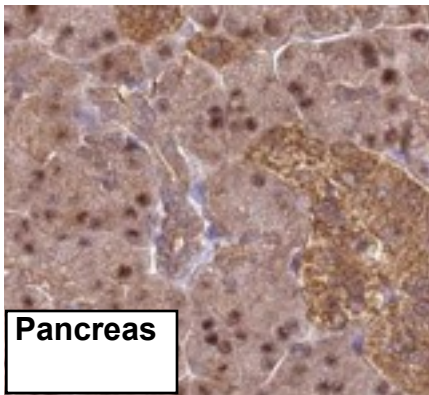
Immunohistochemistry

IHC protocol: HIER pH 6, Dilution 1:60000

IHC test staining: Cytoplasm and nuclei staining in most tissues.

IHC Annotators comments

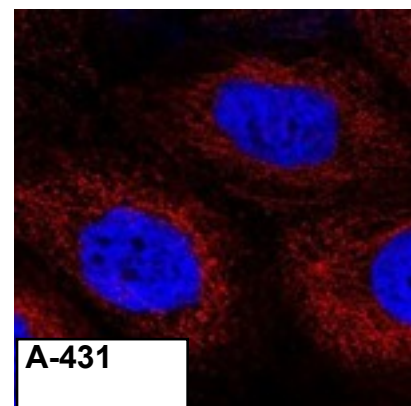
Most normal tissues showed weak to moderate cytoplasmic staining with additional nuclear positivity in several cases. Hepatocytes, cells of CNS, myocytes, glomeruli of kidney and adipocytes were in general negative



Immunofluorescence

IF Overlay: antibody (green), anti-tubuline (red) and DAPI (blue)

IF Localisation: No staining was observed in any of the three cell lines.



Western blot

WB Size markers (kDa): 250, 130, 95, 72, 55, 36, 28, 17, 11

WB Lanes: Marker(1), RT-4(2), U251 MG(3), Plasma(4), Liver(5), Tonsil(6)

WB Target weight (kDa): 29, 27

WB Validation: Supportive (Single band corresponding to the predicted size in kDa (+/-20%))

