

GSTMu1-3

Uniprot ID: [P09488](#)

Protein name: GSTM1_HUMAN

Full name: Glutathione S-transferase Mu 1

Protein existence: evidence at protein level

Function: Conjugation of reduced glutathione to a wide number of exogenous and endogenous hydrophobic electrophiles.

Subcellular location: Cytoplasm.

Tissue specificity: Liver (at protein level).

Six antibodies: GSTMu1-1, GSTMu1-2, GSTMu1-3, GSTMu1-4, GSTMu1-6 and GSTMu1-7 were tested. All six antibodies were approved for IHC. GSTMu1-3 was selected for full protein profiling.

GSTMu1-3 (CAB047357)

OK

Immunohistochemistry

IHC protocol: HIER pH 6, Dilution 1:30000

IHC test staining: Strong staining predominantly in liver, both normal and cancer.

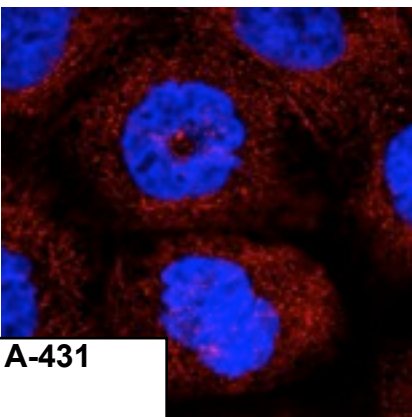
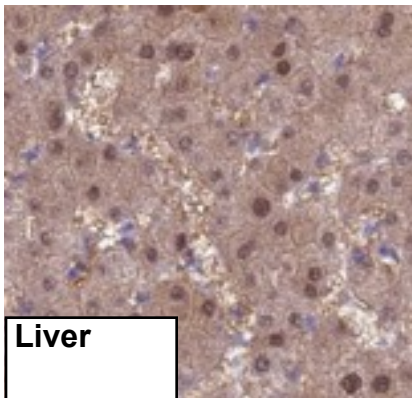
IHC Annotators comments

Hepatocytes and adrenal gland exhibited strong cytoplasmic and nuclear positivity while seminal vesicle displayed strong cytoplasmic positivity. Remaining normal tissues were negative.

Immunofluorescence

IF Overlay: antibody (green), anti-tubuline (red) and DAPI (blue)

IF Localisation: No staining was observed in any of the three cell lines.



Western blot

WB Size markers (kDa): 250, 130, 95, 72, 55, 36, 28, 17, 11

WB Lanes: Marker(1), RT-4(2), U251 MG(3), Plasma(4), Liver(5), Tonsil(6)

WB Target weight (kDa): 26, 17, 28, 21

WB Validation: Not supportive (Weak band of predicted size but with additional bands of higher intensity also present)

