

Crystallin, alpha B

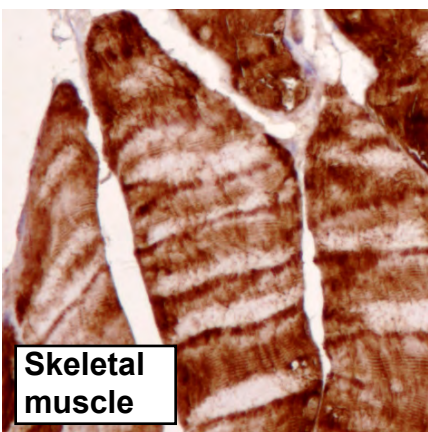
UniProt

Function: May contribute to the transparency and refractive index of the lens.

Tissue specificity: Lens as well as other tissues.

Three antibodies: CRYAB-1, CRYAB-2 and CRYAB-3 were tested. All three antibodies were approved for IHC. CRYAB-1 was selected for full protein profiling.

CRYAB-1 (CAB040560)



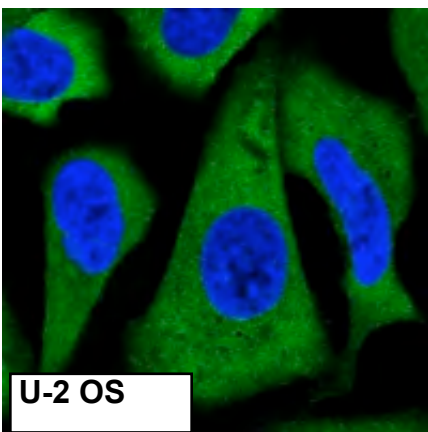
Immunohistochemistry

IHC protocol: HIER pH 6, Dilution 1:4000

IHC test staining: Cytoplasmic staining in selected tissues, eg lens, skeletal muscle, CNS and placenta.

IHC Annotators comments

Strong cytoplasmic positivity was observed in the CNS, thyroid gland, renal tubules, subsets of cells in renal glomeruli and endometrial glands and muscle. Placental trophoblasts showed moderate nuclear and cytoplasmic staining. Remaining normal tissues were in general negative. Strong cytoplasmic positivity was observed in renal cancers, malignant gliomas and melanomas. Thyroid cancers along with a few cases of ovarian, endometrial, lung and skin cancers showed moderate to strong cytoplasmic immunoreactivity. Malignant cells in general were negative.

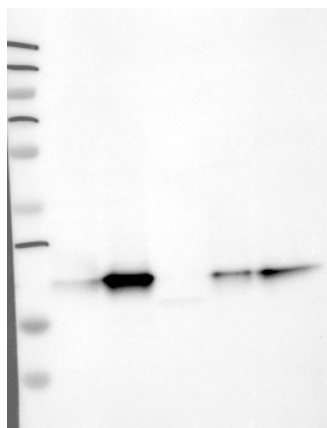


Immunofluorescence

IF Overlay: antibody (green), anti-tubuline (red) and DAPI (blue)

IF Localisation: Staining of cytoplasm in U-2 OS.

IF Validation: Subcellular localization partly supported by literature or where no literature is available.



Western blot

WB Size markers (kDa): 250, 130, 95, 72, 55, 36, 28, 17, 11

WB Lanes: Marker(1), RT-4(2), U251 MG(3), Plasma(4), Liver(5), Tonsil(6)

WB Target weight (kDa): 20

WB Validation: Supportive - Band of predicted size in kDa (+/-20%) with additional bands present.