

# Crystallin, alpha B

## UniProt

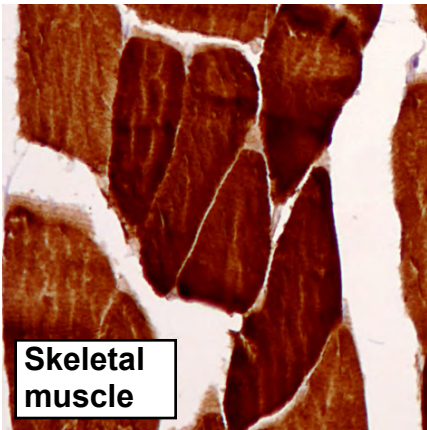
**Function:** May contribute to the transparency and refractive index of the lens.

**Tissue specificity:** Lens as well as other tissues.

**Three antibodies: CRYAB-1, CRYAB-2 and CRYAB-3 were tested. All three antibodies were approved for IHC. CRYAB-1 was selected for full protein profiling.**

---

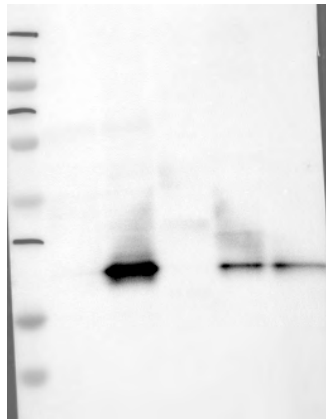
## CRYAB-2 (CAB040561)



### Immunohistochemistry

**IHC protocol:** HIER pH 6, Dilution 1:1500

**IHC test staining:** Cytoplasmic staining in selected tissues, eg lens, skeletal muscle, CNS and placenta.



### Western blot

**WB Size markers (kDa):** 250, 130, 95, 72, 55, 36, 28, 17, 11

**WB Lanes:** Marker(1), RT-4(2), U251 MG(3), Plasma(4), Liver(5), Tonsil(6)

**WB Target weight (kDa):** 20

**WB Validation:** Supportive - Band of predicted size in kDa (+/-20%) with additional bands present.