

CPTC-VTCN1-1 (CAB080409)

Uniprot ID: [Q7Z7D3](#)

Protein name: VTCN1_HUMAN

Full name: V-set domain-containing T-cell activation inhibitor 1

Tissue specificity: Overexpressed in breast, ovarian, endometrial, renal cell (RCC) and non-small-cell lung cancers (NSCLC). Expressed on activated T- and B-cells, monocytes and dendritic cells, but not expressed in most normal tissues (at protein level). Widely expressed, including in kidney, liver, lung, ovary, placenta, spleen and testis.

Function: Negatively regulates T-cell-mediated immune response by inhibiting T-cell activation, proliferation, cytokine production and development of cytotoxicity. When expressed on the cell surface of tumor macrophages, plays an important role, together with regulatory T-cells (Treg), in the suppression of tumor-associated antigen-specific T-cell immunity. Involved in promoting epithelial cell transformation.

Subcellular location:

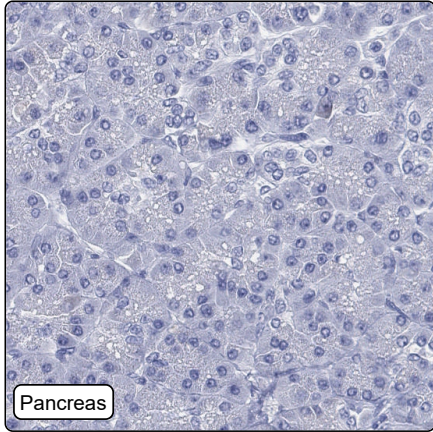
Cell membrane (*match to sequence model*) (Topo: Single-pass type I membrane protein (*curator inference*))

NOTE: Expressed at the cell surface. A soluble form has also been detected.

Protein existence: Experimental evidence at protein level

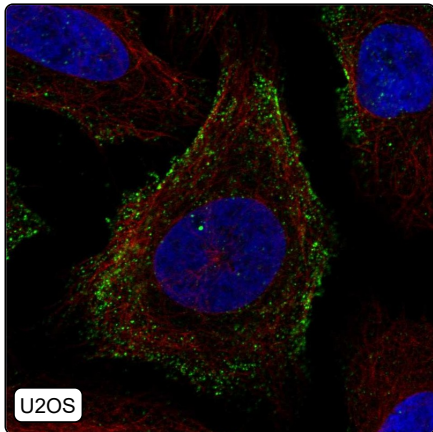
Comment:

Immunohistochemistry



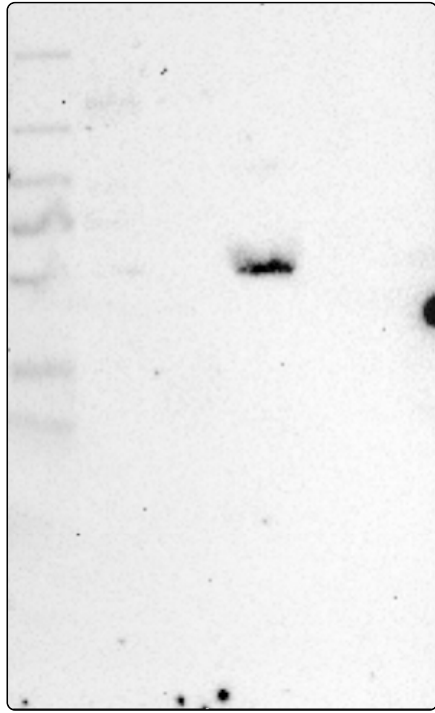
IHC protocol:	HIER pH6, Dilution 1:300
IHC test staining:	No positivity was observed.
Literature conformance:	Not consistent with gene/protein characterization data
Literature significance:	
RNA similarity:	Very low consistency between antibody staining and RNA expression data
RNA tissue specificity:	Tissue enhanced (breast,fallopian tube,pancreas)
RNA tissue distribution:	Detected in many
IHC Sibling similarity:	Other antibody shows dissimilar IHC staining pattern

Immunofluorescence



IF Overlay:	antibody (green), anti-tubulin (red) and DAPI (blue)
IF main location:	Vesicles - 7: Approved (auto)
IF additional location:	
IF approved for publication on HPA:	No
IF in THP-1:	Negative
IF in U2OS:	Vesicles

Western blot



WB Size markers (kDa):	250, 130, 100, 70, 55, 35, 25, 15, 10
WB Lanes:	Marker (1), RT-4 (2), U-251MG (3), Plasma (4), Liver (5), Tonsil (6)
WB Target weight (kDa):	10, 18, 21, 31, 31
WB Validation:	Uncertain (Only bands not corresponding to the predicted size.)