

UB2L6-1

Uniprot ID: O14933

Protein name: UB2L6_HUMAN

Full name: Ubiquitin/ISG15-conjugating enzyme E2 L6

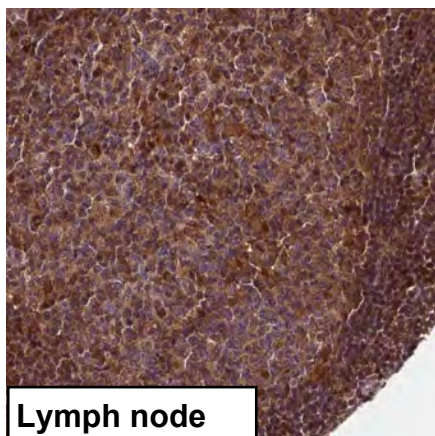
Protein existence: evidence at protein level

Function: Catalyzes the covalent attachment of ubiquitin or ISG15 to other proteins. Functions in the E6/E6-AP-induced ubiquitination of p53/TP53. Promotes ubiquitination and subsequent proteasomal degradation of FLT3.

Three antibodies: UB2L6-1, UB2L6-2 and UB2L6-3 were tested. UB2L6-1 was selected for full protein profiling.

UB2L6-1 (CAB073407)

OK



Immunohistochemistry

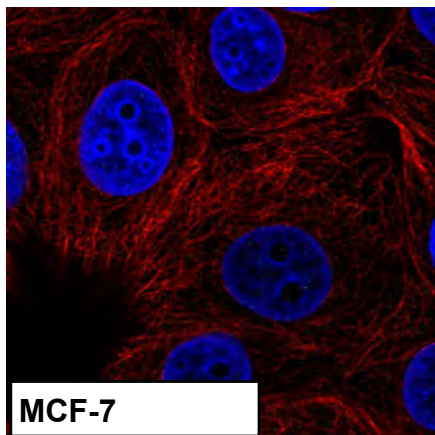
IHC protocol: HIER pH 6, Dilution 1:8000

IHC test staining: Leukocyte positivity along with weak plasma staining.

IHC Annotators comments

Most normal tissues displayed moderate cytoplasmic and nuclear positivity. Lung, esophagus and lymphoid tissues were strongly stained. Cells of CNS, oral mucosa, respiratory epithelial cells in nasopharynx, islets of Langerhans, placental trophoblasts, cells in seminiferous ducts of testis and muscle tissues were mostly negative.

Most cancer tissues displayed moderate to strong cytoplasmic and nuclear immunoreactivity. Several cases of carcinoids, gliomas, liver, prostate and testicular cancers were weakly stained or negative.



Immunofluorescence

IF Overlay: antibody (green), anti-tubuline (red) and DAPI (blue)

IF Localization: Negative IF staining in all tested cell lines

IF Validation: 0

Western blot

WB Size markers (kDa): 250, 130, 95, 72, 55, 36, 28, 17, 10

WB Lanes: Marker(1), RT-4(2), U251 MG(3), Plasma(4), Liver(5), Tonsil(6)

WB Target weight (kDa): 17.8, 15.0, 10.1, 7.5

WB Validation: Supportive: Single band corresponding to the predicted size in kDa (+/-20%)

