

CPTC-LBX1-1 (CAB079926)

Uniprot ID: [P52954](#)

Protein name: LBX1_HUMAN

Full name: Transcription factor LBX1

Function: Transcription factor required for the development of GABAergic interneurons in the dorsal horn of the spinal cord and migration and further development of hypaxial muscle precursor cells for limb muscles, diaphragm and hypoglossal cord.

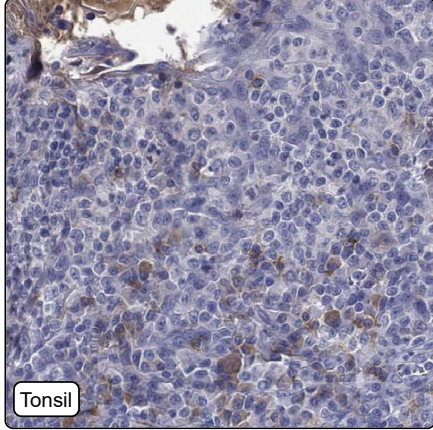
Subcellular location:

Nucleus (*curator inference*)

Protein existence: Experimental evidence at protein level

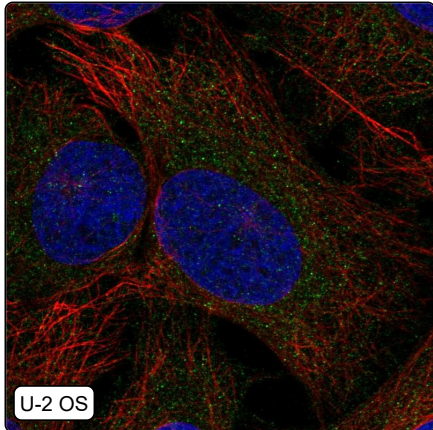
Comment:

Immunohistochemistry



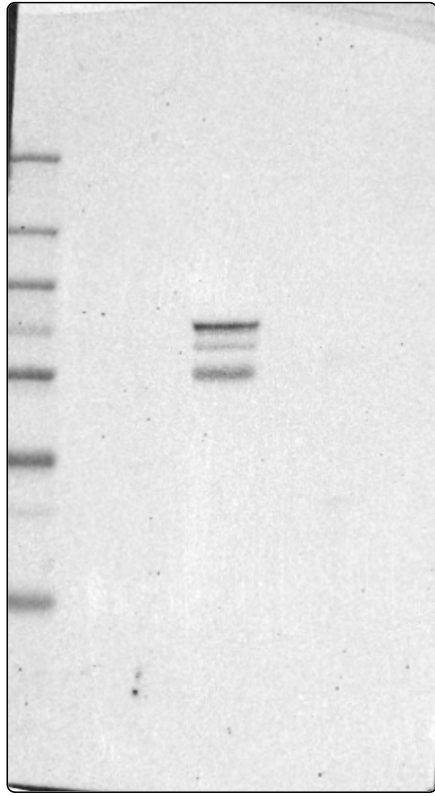
IHC protocol:	HIER pH6, Dilution 1:250
IHC test staining:	Cytoplasmic positivity in immune cells with additional positivity in plasma.
Literature conformance:	Not consistent with gene/protein characterization data
Literature significance:	Limited
RNA consistency:	Not consistent with RNA expression data
IHC Sibling similarity:	Other antibody shows dissimilar IHC staining pattern
IHC fail comment:	ANTIBODY FAILED: Unspecific staining,Not consistent with RNA

Immunofluorescence



IF Overlay:	antibody (green), anti-tubulin (red) and DAPI (blue)
IF main location:	Cytosol - 7: Approved (auto)
IF additional location:	
IF Antibody score:	Failed IF
IF in HEK 293:	Negative
IF in RH-30:	Negative
IF in U-2 OS:	Cytosol

Western blot



WB Size markers (kDa):	250, 130, 100, 70, 55, 35, 25, 15, 10
WB Lanes:	Marker (1), RT4 (2), U-251 MG (3), Plasma (4), Liver (5), Tonsil (6)
WB Target weight (kDa):	30
WB Validation:	Uncertain (Only bands not corresponding to the predicted size.)