

# YWHAE-2

**Uniprot ID:** [P62258](#)

**Protein name:** 1433E\_HUMAN

**Full name:** 14-3-3 protein epsilon

**Protein existence:** evidence at protein level

**Function:** Adapter protein implicated in the regulation of a large spectrum of both general and specialized signaling pathways. Binds to a large number of partners, usually by recognition of a phosphoserine or phosphothreonine motif. Binding generally results in the modulation of the activity of the binding partner.

**Subcellular location:** Cytoplasm (by similarity). Melanosome. *NOTE:* Identified by mass spectrometry in melanosome fractions from stage I to stage IV.

**Three antibodies: YWHAE-1, YWHAE-2 and YWHAE-3 were tested. All three antibodies were approved for IHC. YWHAE-1 was selected for full protein profiling.**

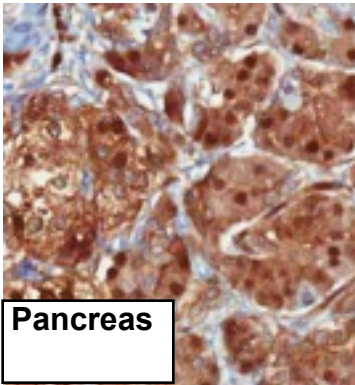
## YWHAE-2 (CAB047351)

OK

### Immunohistochemistry

**IHC protocol:** HIER pH 6, Dilution 1:4500

**IHC test staining:** Cytoplasmic and nuclear staining. Some secreted staining pattern also seen.



Pancreas

### Western blot

**WB Size markers (kDa):** 250, 130, 95, 72, 55, 36, 28, 17, 11

**WB Lanes:** Marker(1), RT-4(2), U251 MG(3), Plasma(4), Liver(5), Tonsil(6)

**WB Target weight (kDa):** 29, 27

**WB Validation:** Supportive (Band of predicted size in kDa (+/-20%) with additional bands present)

