

Uniprot ID: [P04080](#)

Protein name: CYTB\_HUMAN

Full name: Cystatin-B

Protein existence: evidence at protein level

Function: This is an intracellular thiol proteinase inhibitor. Tightly binding reversible inhibitor of cathepsins L, H and B.

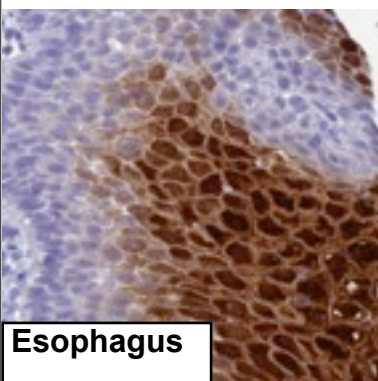
Subcellular location: Cytoplasm. Nucleus.

Three antibodies: CSTB-1, CSTB-2 and CSTB-3 were tested. All three antibodies were approved for IHC. CSTB-3 was selected for full protein profiling.

# CSTB-3

## CSTB-3 (CAB047320)

OK



### Immunohistochemistry

IHC protocol: HIER pH 6, Dilution 1:400

IHC test staining: Strong cytoplasmic staining of squamous epithelia.

### IHC Annotators comments

Superficial squamous epithelia and fraction of urothelial cells displayed moderate to strong cytoplasmic and nuclear immunoreactivity.

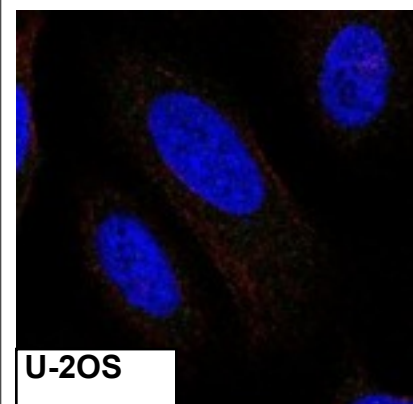
Fraction of neuronal cells and chondrocytes showed moderate cytoplasmic staining.

Remaining normal tissues were negative

### Immunofluorescence

IF Overlay: antibody (green), anti-tubuline (red) and DAPI (blue)

IF Localization: No staining was observed in any of the three cell lines.



### Western blot

WB Size markers (kDa): 250, 130, 95, 72, 55, 36, 28, 17, 11

WB Lanes: Marker(1), RT-4(2), U251 MG(3), Plasma(4), Liver(5), Tonsil(6)

WB Target weight (kDa): 11

WB Validation: Supportive (Band of predicted size in kDa (+/-20%) with additional bands present.)

