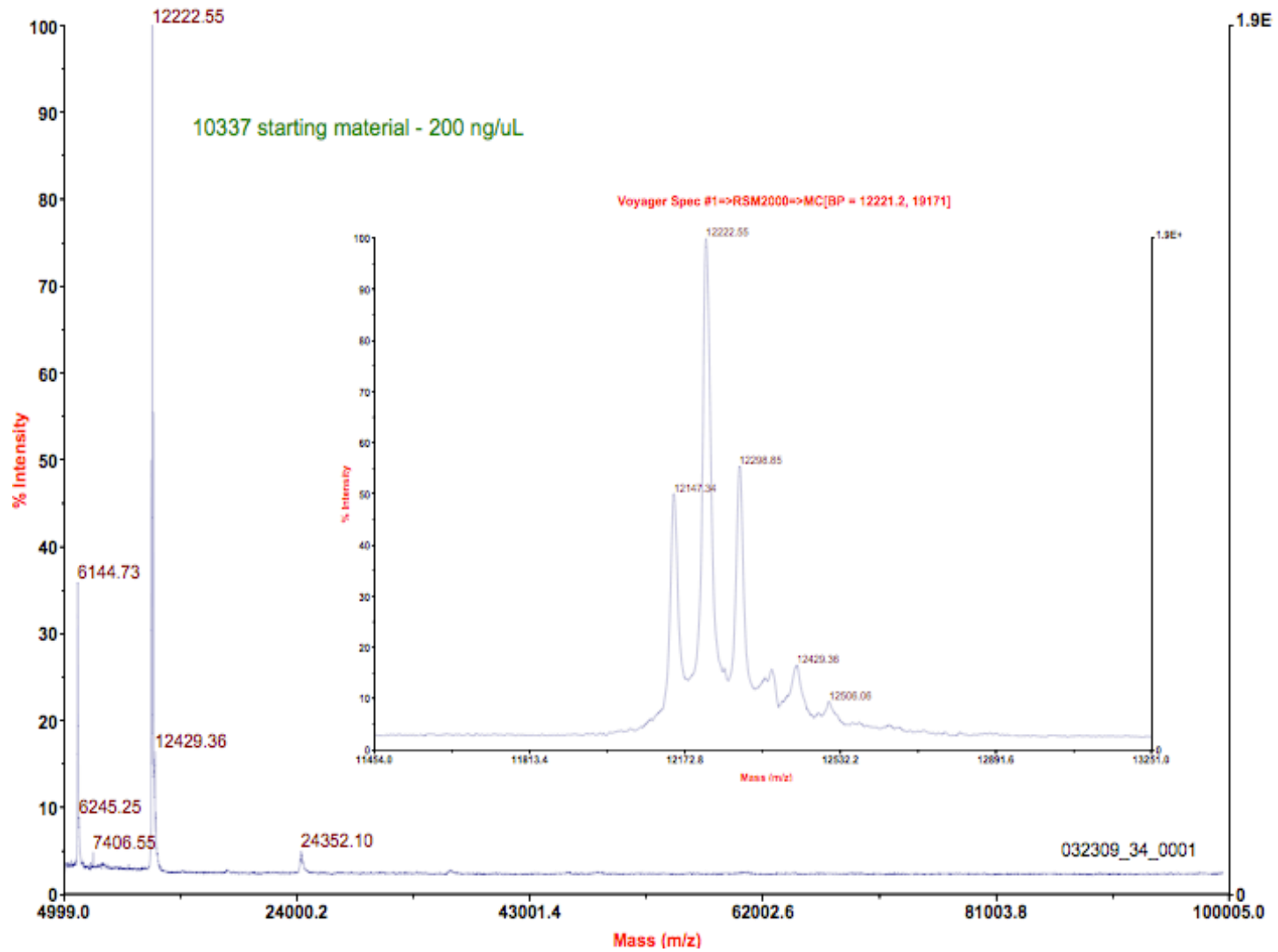
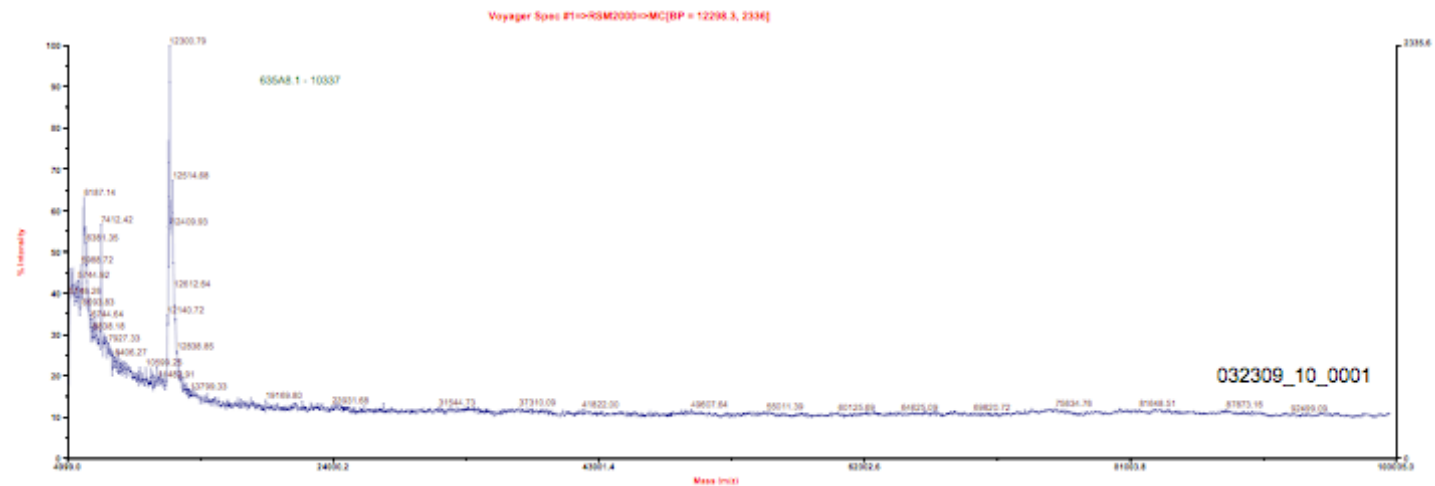
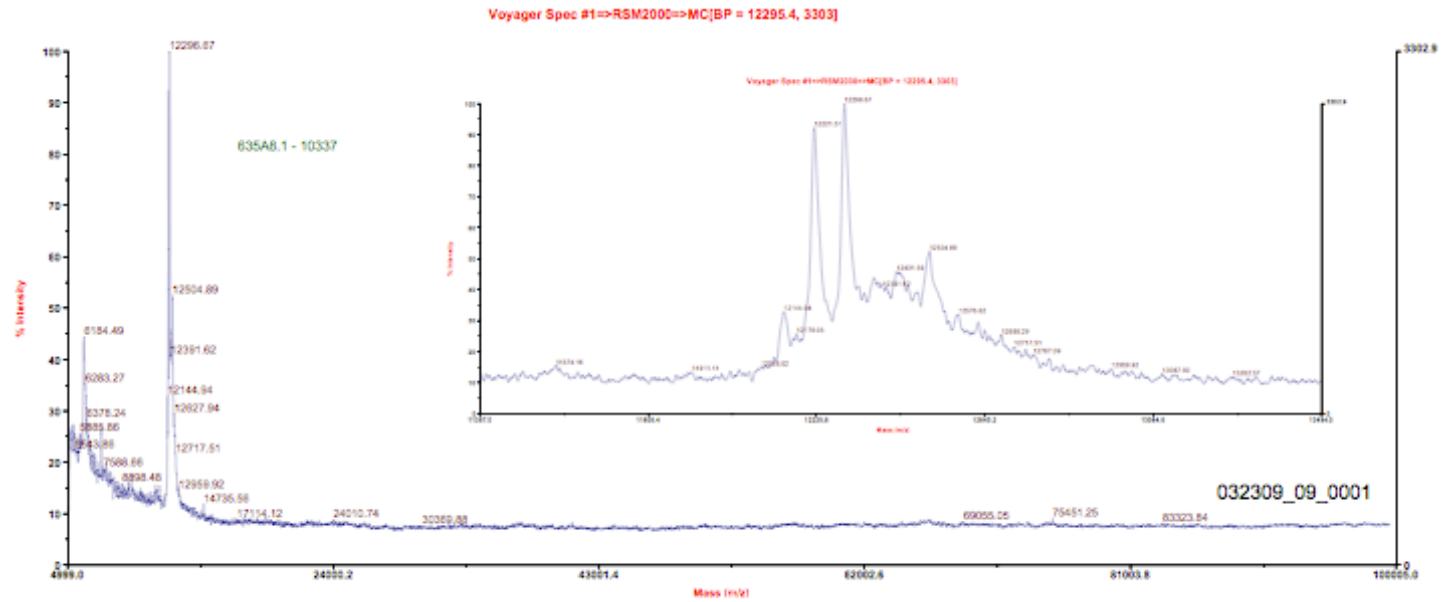


# Starting Material - CPTC-S100A4 (MALDI)

Voyager Spec #1=>RSM2000=>MC[BP = 12221.2, 19171]



# Immuno Capture-MS Antibody CPTC-S100A4-1 (duplicates) Antibody suitable for ICMS



# Immuno Capture-MS - No Antibody (control duplicates) **No antigen captured**

