

CPTC-KRT7-1(CAB080110)

Uniprot ID: [P08729](#)

Protein name: K2C7_HUMAN

Full name: Keratin, type II cytoskeletal 7

Tissue specificity: Expressed in cultured epidermal, bronchial and mesothelial cells but absent in colon, ectocervix and liver. Observed throughout the glandular cells in the junction between stomach and esophagus but is absent in the esophagus.

Function: Blocks interferon-dependent interphase and stimulates DNA synthesis in cells. Involved in the translational regulation of the human papillomavirus type 16 E7 mRNA (HPV16 E7).

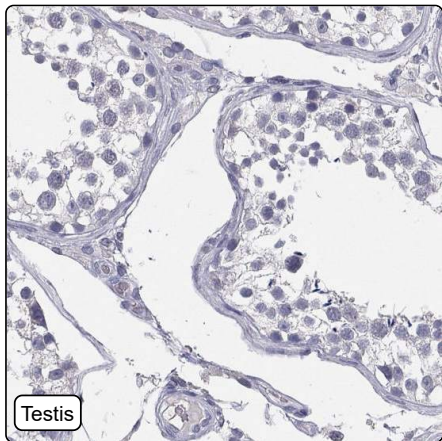
Subcellular location:

Cytoplasm (*experimental evidence*)

Protein existence: Experimental evidence at protein level

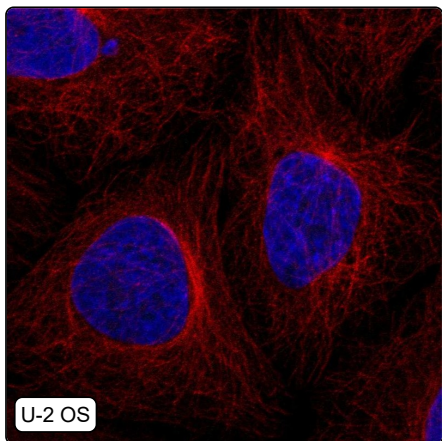
Comment:

Immunohistochemistry



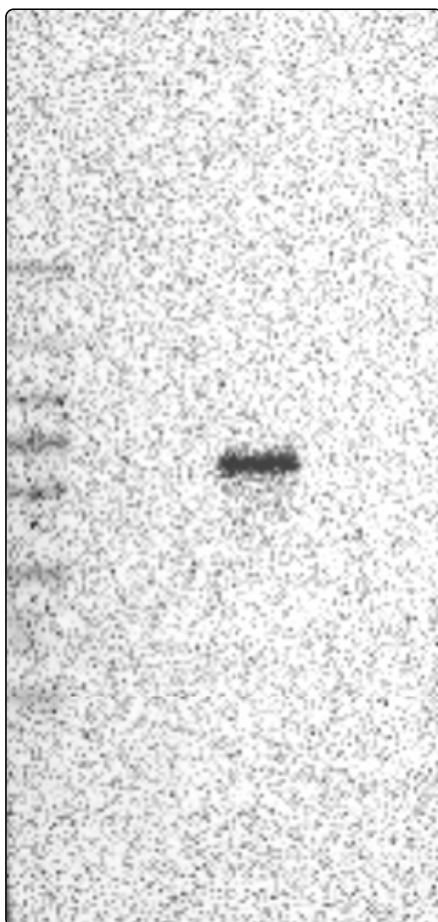
IHC protocol:	HIER pH6, Dilution 1:500
IHC test staining:	Negative in all tissues.
Literature conformance:	Not consistent with gene/protein characterization data
Literature significance:	
RNA similarity:	Very low consistency between antibody staining and RNA expression data
RNA tissue specificity:	Tissue enhanced (salivary gland, thyroid gland)
RNA tissue distribution:	Detected in many
IHC Sibling similarity:	Other antibody shows dissimilar IHC staining pattern

Immunofluorescence



IF Overlay:	antibody (green), anti-tubulin (red) and DAPI (blue)
IF main location:	
IF additional location:	
IF approved for publication on HPA:	No
IF in SiHa:	Negative
IF in SK-MEL-30:	Negative
IF in U-2 OS:	Negative

Western blot



WB Size markers (kDa):	250, 130, 100, 70, 55, 35, 25, 15, 10
WB Lanes:	Marker (1), RT4 (2), U-251 MG (3), Plasma (4), Liver (5), Tonsil (6)
WB Target weight (kDa):	15, 51
WB Validation:	Uncertain (Single band differing more than +/-20% from predicted size in kDa and not supported by experimental and/or bioinformatic data.)