

CPTC-TAPBP-1 (CAB080404)

Uniprot ID: [O15533](#)

Protein name: TPSN_HUMAN

Full name: Tapasin

Tissue specificity: Neutrophils, mostly in fully differentiated cells.

Function: Involved in the association of MHC class I with transporter associated with antigen processing (TAP) and in the assembly of MHC class I with peptide (peptide loading).

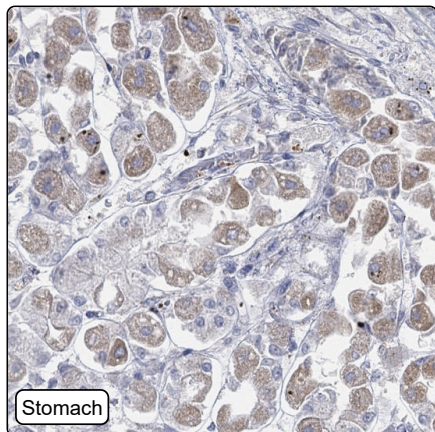
Subcellular location:

Endoplasmic reticulum membrane (*curator inference*) (Topo: Single-pass type I membrane protein (*curator inference*))

Protein existence: Experimental evidence at protein level

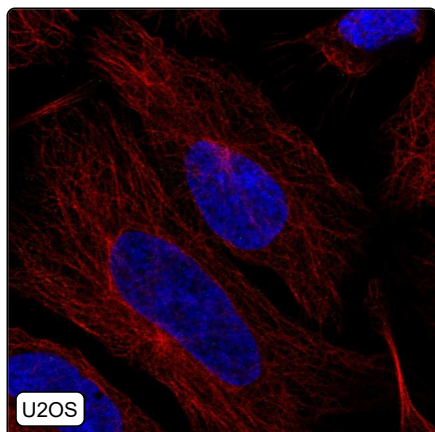
Comment: IF: negative/Charlotte

Immunohistochemistry



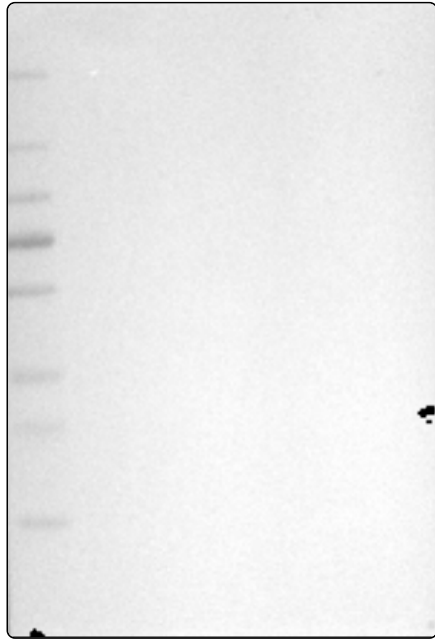
IHC protocol:	HIER pH6, Dilution 1:3100
IHC test staining:	Weak cytoplasmic positivity in stomach and kidney.
Literature conformance:	Not consistent with gene/protein characterization data
Literature significance:	
RNA similarity:	Very low consistency between antibody staining and RNA expression data
RNA tissue specificity:	Low tissue specificity
RNA tissue distribution:	Detected in all
IHC Sibling similarity:	Other antibody shows dissimilar IHC staining pattern

Immunofluorescence



IF Overlay:	antibody (green), anti-tubulin (red) and DAPI (blue)
IF main location:	
IF additional location:	
IF approved for publication on HPA:	No
IF in THP-1:	Negative
IF in U2OS:	Negative

Western blot



WB Size markers (kDa):	250, 130, 100, 70, 55, 35, 25, 15, 10
WB Lanes:	Marker (1), RT-4 (2), U-251MG (3), Plasma (4), Liver (5), Tonsil (6)
WB Target weight (kDa):	16, 20, 38, 48, 49, 54
WB Validation:	Uncertain (No bands detected.)