

Uniprot ID: [P49888](#)

Protein name: ST1E1_HUMAN

SULT1E1-1

Full name: Estrogen sulfotransferase

Protein existence: evidence at protein level

Function: May control the level of the estrogen receptor by sulfurylating free estradiol. Maximally sulfates beta-estradiol and estrone at concentrations of 20 nM. Also sulfates dehydroepiandrosterone, pregnenolone, ethinylestradiol, equalenin, diethylstilbesterol and 1-naphthol, at significantly higher concentrations; however, cortisol, testosterone and dopamine are not sulfated.

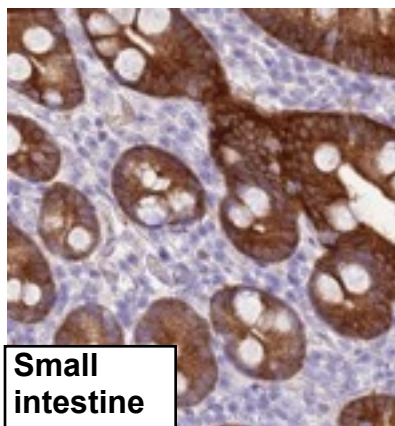
Subcellular location: Cytoplasm.

Tissue specificity: Liver, intestine and at lower level in the kidney.

Three antibodies: SULT1E1-1, SULT1E1-2, and SULT1E1-3 were tested. All three antibodies were approved for IHC. SULT1E1-1 was selected for full protein profiling.

SULT1E1-1 (CAB047344)

OK



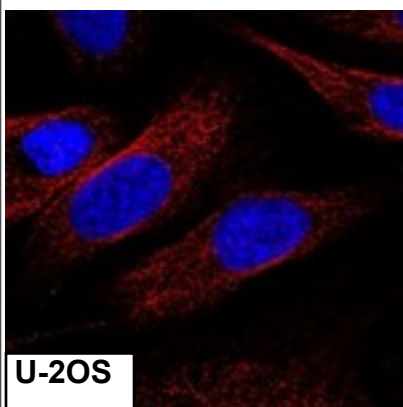
Immunohistochemistry

IHC protocol: HIER pH 6, Dilution 1:20000

IHC test staining: Strong staining of intestine and weaker in liver and kidney.

IHC Annotators comments

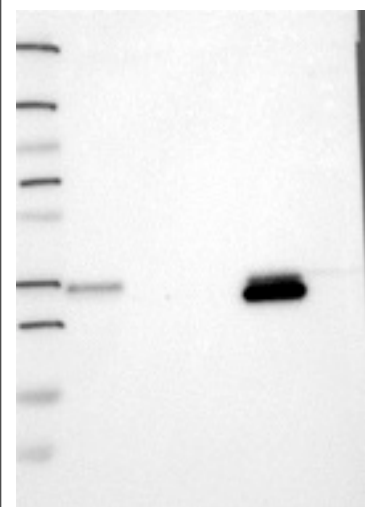
Gastrointestinal tract showed moderate to strong cytoplasmic staining. Adrenal gland, hepatocytes and Leydig cells displayed moderate positivity. Remaining normal tissues were mainly negative.



Immunofluorescence

IF Overlay: antibody (green), anti-tubuline (red) and DAPI (blue)

IF Localization: No staining was observed in any of the three cell lines.



Western blot

WB Size markers (kDa): 250, 130, 95, 72, 55, 36, 28, 17, 11

WB Lanes: Marker(1), RT-4(2), U251 MG(3), Plasma(4), Liver(5), Tonsil(6)

WB Target weight (kDa): 35, 15

WB Validation: Supportive (Single band corresponding to the predicted size in kDa (+/-20%))