

CPTC-SERPINA6-1 (CAB080007)

Uniprot ID: [P08185](#)

Protein name: CBG_HUMAN

Full name: Corticosteroid-binding globulin

Tissue specificity: Plasma; synthesized in liver. Has also been identified in a number of glucocorticoid responsive cells.

Function: Major transport protein for glucocorticoids and progestins in the blood of almost all vertebrate species.

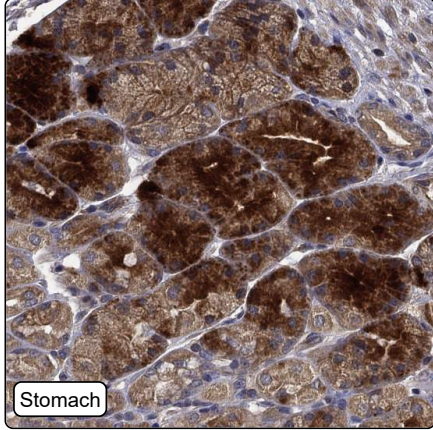
Subcellular location:

Secreted

Protein existence: Experimental evidence at protein level

Comment: ICC-IF: Not expressed in more cell lines in our cell line panel. /Ulrika Axelsson

Immunohistochemistry



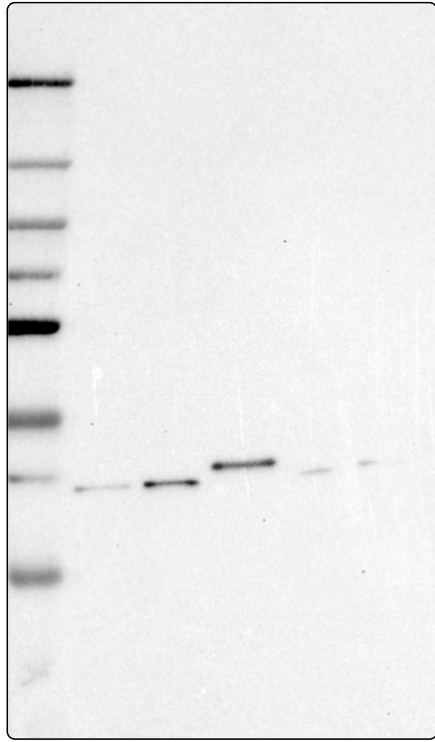
IHC protocol:	HIER pH6, Dilution 1:550
IHC test staining:	Moderate cytoplasmic positivity in smooth muscle and stomach. Additional lipofuscin positivity.
Literature conformance:	Not consistent with gene/protein characterization data
Literature significance:	Limited
RNA consistency:	Not consistent with RNA expression data
IHC Sibling similarity:	Other antibody shows dissimilar IHC staining pattern
IHC fail comment:	ANTIBODY FAILED: Improbable histological location, Not consistent with RNA

Immunofluorescence



IF Overlay:	antibody (green), anti-tubulin (red) and DAPI (blue)
IF main location:	
IF additional location:	
IF Antibody score:	Failed IF
IF in Hep G2:	Negative
IF in U-2 OS:	Negative

Western blot



WB Size markers (kDa):	250, 130, 100, 70, 55, 35, 25, 15, 10
WB Lanes:	Marker (1), RT4 (2), U-251 MG (3), Plasma (4), Liver (5), Tonsil (6)
WB Target weight (kDa):	15, 45
WB Validation:	Uncertain (Single band differing more than +/-20% from predicted size in kDa and not supported by experimental and/or bioinformatic data.)