

MDH1-1

Uniprot ID: [P40925](#)

Protein name: MDHC_HUMAN

Full name: Malate dehydrogenase, cytoplasmic

Protein existence: evidence at protein level

Subcellular location: Cytoplasm.

Three antibodies: MDH1-1, MDH1-2 and MDH1-3 were tested. All three were approved for IHC. MDH1-1 was selected for full protein profiling.

MDH1-1 (CAB047333)

OK

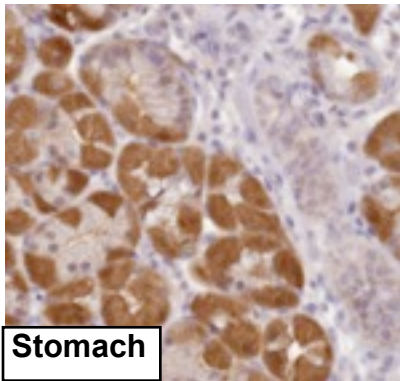
Immunohistochemistry

IHC protocol: HIER pH 6, Dilution 1:6000

IHC test staining: Cytoplasm in several tissues, e.g. CNS and intestine.

IHC Annotators comments

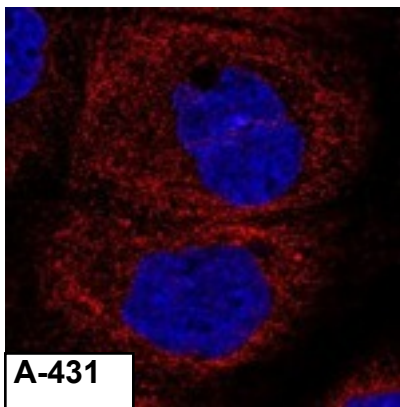
Intestinal tract, bronchus, hepatocytes, pancreas, renal tubules, testis, myocytes, neuronal cells of CNS, thyroid and adrenal gland displayed weak to moderate cytoplasmic and occasional nuclear positivity. Stomach showed strong cytoplasmic staining while epididymis exhibited strong membranous immunoreactivity. Remaining normal tissues were negative.



Immunofluorescence

IF Overlay: antibody (green), anti-tubuline (red) and DAPI (blue)

IF Localization: No staining was observed in any of the three cell lines.



Western blot

WB Size markers (kDa): 250, 130, 95, 72, 55, 36, 28, 17, 11

WB Lanes: Marker(1), RT-4(2), U251 MG(3), Plasma(4), Liver(5), Tonsil(6)

WB Target weight (kDa): 24, 23, 36, 39, 36, 13, 27, 12, 19, 7, 10

WB Validation: Supportive (Band of predicted size in kDa (+/-20%) with additional bands present)

