

EBAG9-1

Uniprot ID: O00559

Protein name: RCAS1_HUMAN

Full name: Receptor-binding cancer antigen expressed on SiSo cells

Protein existence: evidence at protein level

Function: May participate in suppression of cell proliferation and induces apoptotic cell death through activation of interleukin-1-beta converting enzyme (ICE)-like proteases.

Three antibodies: EBAG9-1, EBAG9-2 and EBAG9-3 were tested. EBAG9-1 was selected for full protein profiling.

EBAG9-1 (CAB072810)

OK



Small intestine

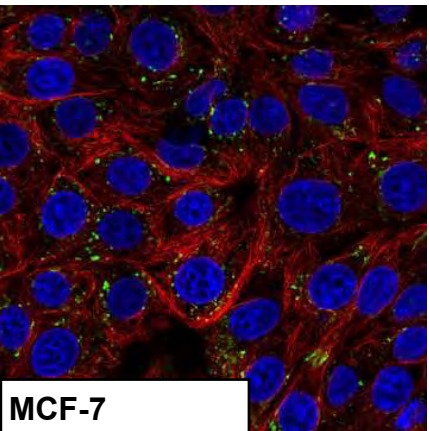
Immunohistochemistry

IHC protocol: HIER pH 6, Dilution 1:4000

IHC test staining: Ubiquitous cytoplasmic expression with a granular pattern.

IHC Annotators comments

A majority of normal tissues showed weak to moderate cytoplasmic positivity. Intestinal glands displayed strong immunoreactivity. Soft tissues, glial cells, hematopoietic cells, trophoblasts, pneumocytes, liver, islets of Langerhans, stromal cells in uterus and ovary were negative.



MCF-7

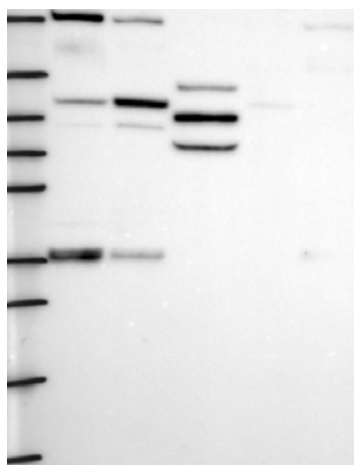
Majority of cancer tissues showed weak to moderate cytoplasmic positivity. Renal cell carcinomas and testis cancers were generally negative.

Immunofluorescence

IF Overlay: antibody (green), anti-tubuline (red) and DAPI (blue)

IF Localization: Positivity in Golgi apparatus

IF Validation: The subcellular location is supported by literature



Western blot

WB Size markers (kDa): 250, 130, 95, 72, 55, 36, 28, 17, 10

WB Lanes: Marker(1), RT-4(2), U251 MG(3), Plasma(4), Liver(5), Tonsil(6)

WB Target weight (kDa): 29.5, 24.4, 22.5, 8.7, 4.5

WB Validation: Not supportive (Weak band of predicted size but with additional bands of higher intensity also present)