

CPTC-MSLN-2 (CAB080357)

Uniprot ID: Q13421

Protein name: MSLN_HUMAN

Full name: Mesothelin

Tissue specificity: Expressed in lung. Expressed at low levels in heart, placenta and kidney. Expressed in mesothelial cells. Highly expressed in mesotheliomas, ovarian cancers, and some squamous cell carcinomas (at protein level).

Function: Membrane-anchored forms may play a role in cellular adhesion. Megakaryocyte-potentiating factor (MPF) potentiates megakaryocyte colony formation in vitro.

Subcellular location:

Unnamed:

Cell membrane (Topo: Lipid-anchor,GPI-anchor)

Golgi apparatus

Isoform 3:

Secreted

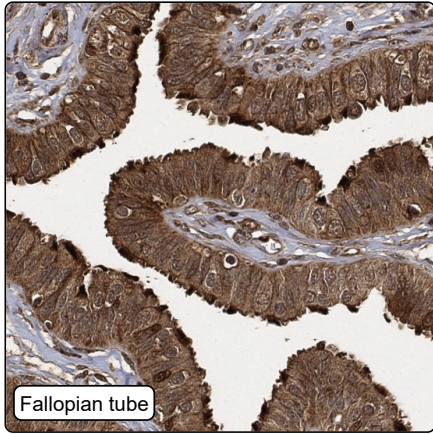
Megakaryocyte-potentiating factor:

Secreted

Protein existence: Experimental evidence at protein level

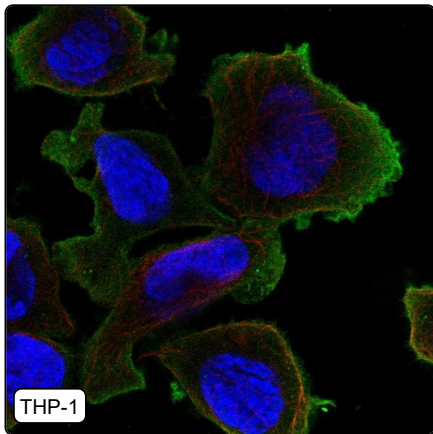
Comment:

Immunohistochemistry



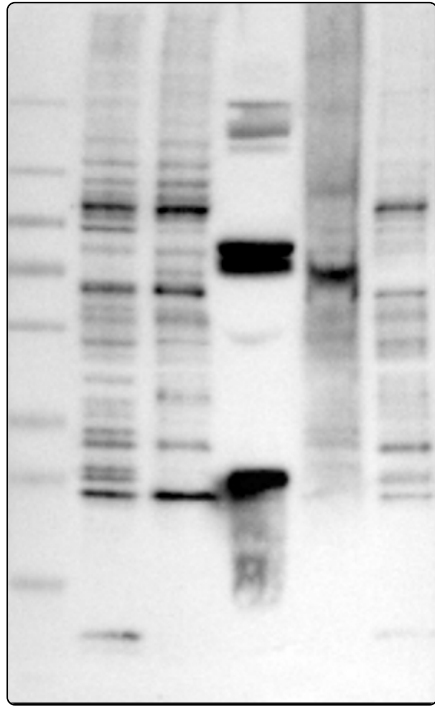
IHC protocol:	HIER pH6, Dilution 1:1000
IHC test staining:	Most tissues showed cytoplasmic positivity, additional plasma and nuclear staining was also observed.
Literature conformance:	Not consistent with gene/protein characterization data
Literature significance:	
RNA similarity:	Very low consistency between antibody staining and RNA expression data
RNA tissue specificity:	Tissue enhanced (adipose tissue,fallopian tube)
RNA tissue distribution:	Detected in many
IHC Sibling similarity:	Other antibody shows dissimilar IHC staining pattern

Immunofluorescence



IF Overlay:	antibody (green), anti-tubulin (red) and DAPI (blue)
IF main location:	Plasma membrane - 10 [3]: Approved (auto)
IF additional location:	
IF approved for publication on HPA:	Yes
IF in THP-1:	Plasma membrane
IF in U2OS:	Plasma membrane

Western blot



WB Size markers (kDa):	250, 130, 100, 70, 55, 35, 25, 15, 10
WB Lanes:	Marker (1), RT-4 (2), U-251MG (3), Plasma (4), Liver (5), Tonsil (6)
WB Target weight (kDa):	18, 37, 38, 44, 68, 68, 68, 69
WB Validation:	Supported (Band of predicted size in kDa (+/-20%) with additional bands present.)