

CPTC-SCAMP3-1 (CAB080163)

Uniprot ID: [O14828](#)

Protein name: SCAM3_HUMAN

Full name: Secretory carrier-associated membrane protein 3

Tissue specificity: Widely expressed, with highest expression in heart and skeletal muscle.

Function: Functions in post-Golgi recycling pathways. Acts as a recycling carrier to the cell surface.

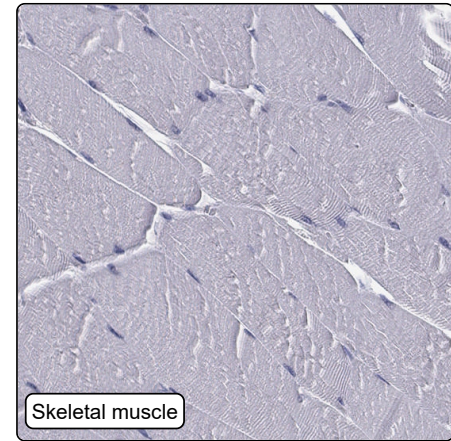
Subcellular location:

Membrane (Topo: Multi-pass membrane protein)

Protein existence: Experimental evidence at protein level

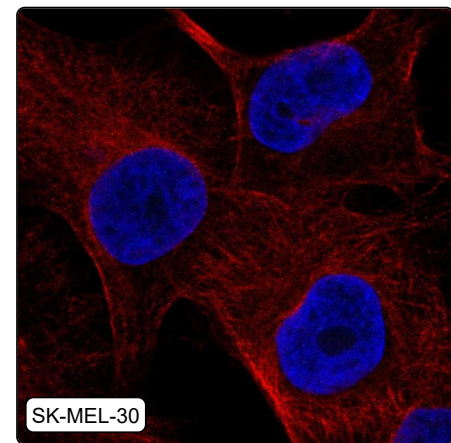
Comment:

Immunohistochemistry



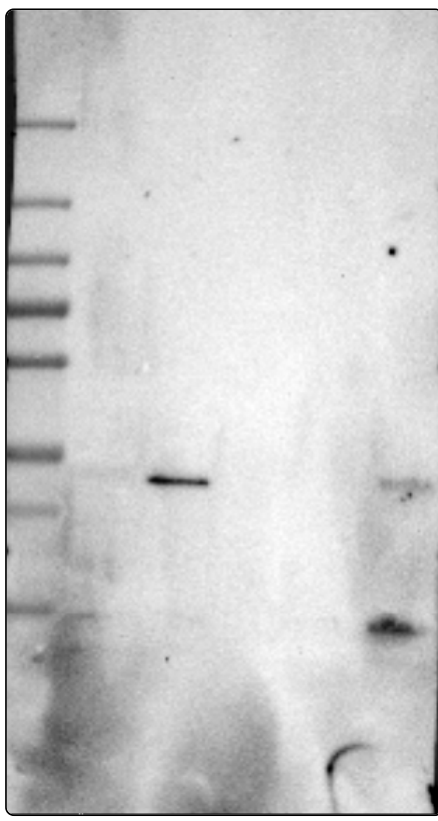
IHC protocol:	HIER pH6, Dilution 1:250
IHC test staining:	Positive in a subset of cells in the gastrointestinal tract.
Literature conformance:	Not consistent with gene/protein characterization data
Literature significance:	Limited
RNA similarity:	Very low consistency between antibody staining and RNA expression data
RNA tissue specificity:	Low tissue specificity
RNA tissue distribution:	Detected in many
IHC Sibling similarity:	Other antibody shows dissimilar IHC staining pattern

Immunofluorescence



IF Overlay:	antibody (green), anti-tubulin (red) and DAPI (blue)
IF main location:	
IF additional location:	
IF approved for publication on HPA:	No
IF in SiHa:	Negative
IF in SK-MEL-30:	Negative
IF in U-2 OS:	Negative

Western blot



WB Size markers (kDa):	250, 130, 100, 70, 55, 35, 25, 15, 10
WB Lanes:	Marker (1), RT4 (2), U-251 MG (3), Plasma (4), Liver (5), Tonsil (6)
WB Target weight (kDa):	35, 38
WB Validation:	Supported (Band of predicted size in kDa (+/-20%) with additional bands present.)