

CPTC-CEACAM8-2 (CAB080307)

Uniprot ID: P31997

Protein name: CEAM8_HUMAN

Full name: Carcinoembryonic antigen-related cell adhesion molecule 8

Tissue specificity: Expressed in leukocytes of chronic myeloid Leukemia patients and bone marrow.

Function: Cell surface glycoprotein that plays a role in cell adhesion in a calcium-independent manner (PubMed:8776764, PubMed:2022629, PubMed:11590190). Mediates heterophilic cell adhesion with other carcinoembryonic antigen-related cell adhesion molecules, such as CEACAM6 (PubMed:8776764, PubMed:2022629, PubMed:11590190). Heterophilic interaction with CEACAM8 occurs in activated neutrophils (PubMed:8776764).

Subcellular location:

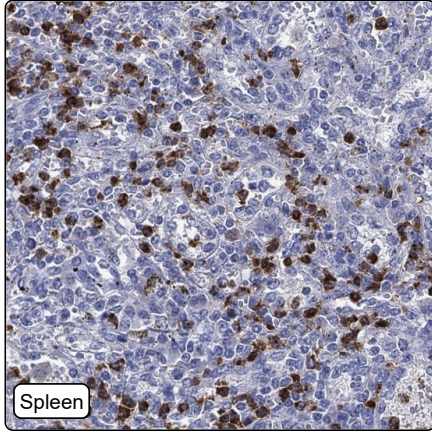
Cell membrane (*experimental evidence*) (Topo: Lipid-anchor,GPI-anchor (*experimental evidence*))

Cell surface (*experimental evidence*)

Protein existence: Experimental evidence at protein level

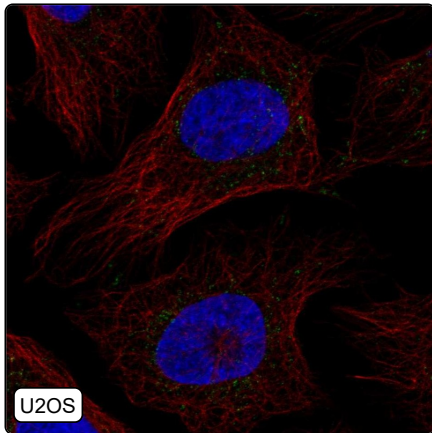
Comment:

Immunohistochemistry



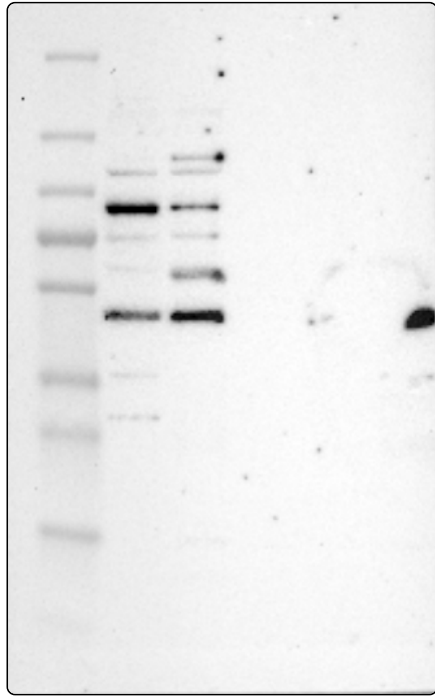
IHC protocol:	HIER pH6, Dilution 1:2150
IHC test staining:	Cytoplasmic positivity was observed in bone marrow and immune cells.
Literature conformance:	Consistent with extensive gene/protein characterization data
Literature significance:	
RNA similarity:	High consistency between antibody staining and RNA expression data
RNA tissue specificity:	Tissue enriched (bone marrow)
RNA tissue distribution:	Detected in some
IHC Sibling similarity:	Other antibody shows partly similar IHC staining pattern

Immunofluorescence



IF Overlay:	antibody (green), anti-tubulin (red) and DAPI (blue)
IF main location:	
IF additional location:	
IF approved for publication on HPA:	No
IF in THP-1:	Negative
IF in U2OS:	Negative

Western blot



WB Size markers (kDa):	250, 130, 100, 70, 55, 35, 25, 15, 10
WB Lanes:	Marker (1), RT-4 (2), U-251MG (3), Plasma (4), Liver (5), Tonsil (6)
WB Target weight (kDa):	5, 38
WB Validation:	Uncertain (Weak band of predicted size but with additional bands of higher intensity also present.)